

---

# SUMMARY

Location	2
History	5

---

<b>TOURISM</b>	<b>6</b>
Eye-catching figures	6
<u>Themes</u>	
Highlights	8
Culture	11
Design	19
Walks and nature	26
Memorial tourism	30
River tourism and bodies of water	34
KIDS	37
Thermalism	40
Regional Products	42
Religious Tourism	48
Thrills !	49
Circuit de Spa-Francorchamps	51
Accessible Tourism	53
Regular events	54
Liégeois celebrities	60

---

<b>MARKETING</b>	<b>61</b>
Online sales site: <a href="http://www.liegetourisme.be">www.liegetourisme.be</a>	61
Business Tourism	62
Groups	63

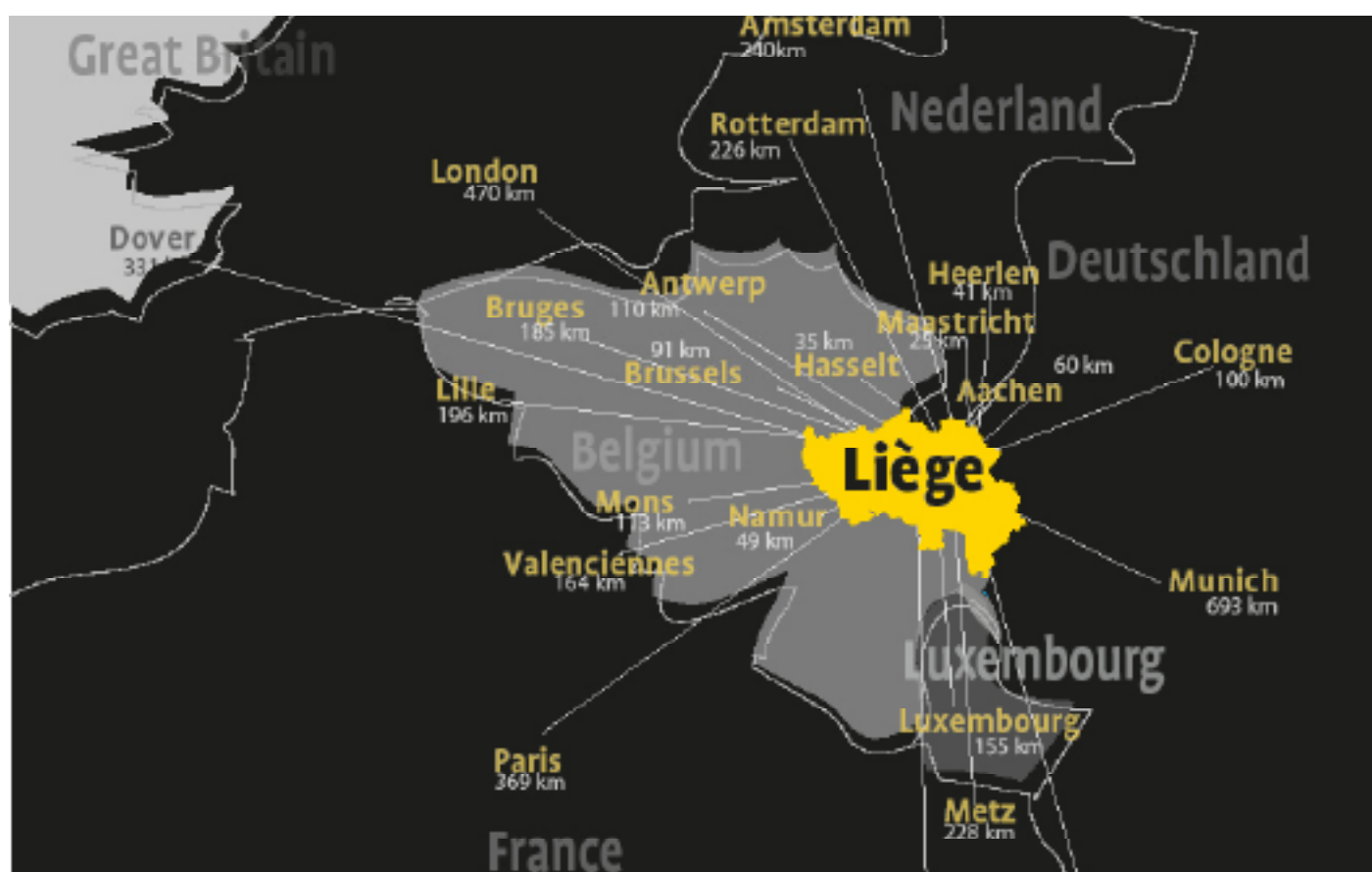
<b>NEWS</b>	<b>67</b>
<b>PRESS CONTACT</b>	<b>68</b>



# INTRODUCTION

## ► Location

Liège is situated at the gateway to Ardenne. Its geographic location means that it is exceptionally open to Europe, and a major motorway and rail network reinforces its international calling. Liège is promoted as being the transportation hub of the Meuse-Rhine Euregion. Meuse-Rhine Euregion, which brings together the regions of Liège, Aachen, Hasselt, Heerlen and Maastricht, covers a surface area of 10,500 km and is home to 3.7 million inhabitants. At a distance of just 30 km away from the Netherlands and 45 km away from Germany, Liège is also ideally located on the London - Brussels - Berlin high-speed TGV train route, not forgetting the Thalys link with Paris (barely 2 hours and 20 minutes).



## | Getting to Liège by car

A highly comprehensive road and motorway network (E40, E25, E42, E313) makes it very easy to get to Liège by car from the major Belgian and European cities.

With its motorway network shaped like a seven-pointed star, Liège features among Europe's principal communication hubs.

The province is served by 250 kilometres of motorways. Thanks to its rapid traffic flows, Austria, Italy, Scandinavia or even the Eastern European countries can be reached in just one day.

The Cointe motorway tunnel, to the south of Liège city, was designated "Europe's safest tunnel" by 31 European Touring Clubs.

## | Getting to Liège by plane

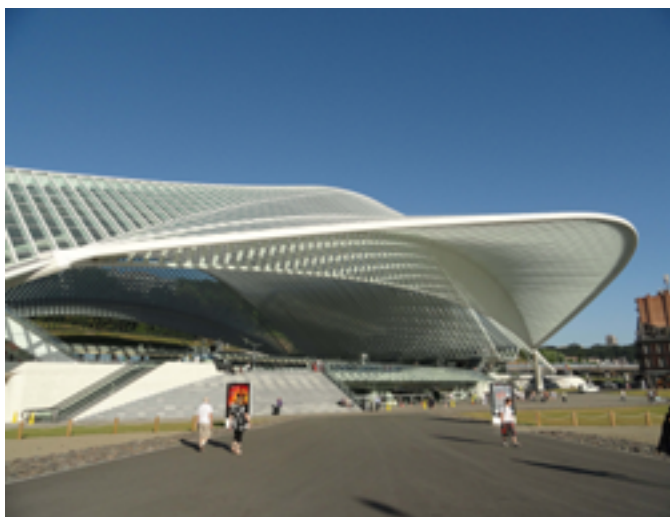


Liège Airport, also known as "Aéroport de Bierset", is located in the heart of the motorway axes towards Brussels, Maastricht and Amsterdam, Anvers, Aachen, Luxembourg, Namur and Paris. It is Europe's eighth biggest airport in terms of air freight and ranks 38 in the world (24 in the world if only international traffic is taken into account).

Liège Airport is the first European airport to focus its policy on freight development. It also opens up major tourist destinations for passenger traffic.

It is Belgium's third-biggest passenger airport, the two biggest in terms of passenger traffic being Brussels airport at Zaventem and Charleroi Bruxelles-Sud airport.

In terms of jobs, Liège Airport employs 10,000 people (directly and indirectly).



## | Getting to Liège by train

With its 3,454 kilometres of railway, the network of the Société Nationale des Chemins de fer Belges (SNCB) is one of Europe's densest and most modern.

The city of Liège comprises three stations in the city centre and is equipped to accommodate high-speed trains (TGV). At the heart of the strategic London-Paris-Berlin triangle, today TGV, Thalys or ICE trains set off 8 times a day for France and even up to 10 times a day for Germany, not forgetting the numerous connections that can be planned daily on the Eurostar via Brussels.

Liège Country is also served by numerous local stations.

Finally, Liège residents have the use of a monumental station designed by Santiago Calatrava, which opened in 2009. A station with futuristic architecture that took ten years to build, directly accessible by motorway – and a draw for guided tours, its architecture is so impressive.



## | Getting to Liège by boat

Liège port is located in the heart of the major Rhine-Scheldt-Meuse delta, where the density of navigable routes is among the highest in the world. It is directly linked with the ports of Anvers (via the Albert canal), Rotterdam (via the Meuse and the Juliana canal) and Dunkirk. The authorities of the Port Autonome de Liège (P. A. L.) manage 26 different quays in and around the city of Liège. The complex Liège port ranks third among European river ports, behind the Rhine port of Duisburg (Germany) and the Autonomous Port of Paris. Liège is also happy to welcome owners of pleasure craft, who will be impressed by the Yacht Harbour and its famous dipper.





## ► History

### *Liège province: a bit of history...*

The Province of Liège extends across a surface area of 3,862 km and comprises a population of 1,067,685 inhabitants. Liège province has 84 municipalities and 4 districts: Huy, Liège, Verviers and Waremme.

**The episcopal principality of Liège was a State of the German Holy Roman Empire**, included within Westphalia, with Liège as its capital. The year 985 saw the birth of the episcopal principality and Notger, bishop of Liège from 972, became prince-bishop through receiving the County of Huy. This State endured for 800 years until the Liège Revolution (1789>1795), which led to the abolition of the principality of Liège.



When the **Principality of Liège was reunified with revolutionary France**, the département of Ourthe (sometimes spelt Ourte) was mainly founded on the incorporation of the Abbey Principality of Savelot-Malmedy, and also comprised the central part of the principality of Liège, 12 municipalities of the county of Namur, 26 of the duchy of Brabant, 34 of the duchy of Luxembourg and 3 localities arising from Trier and Cologne. This département was disbanded on the fall of the First Empire and replaced, in 1814, by the Province of Liège under Dutch rule.

**Liège Province was born in 1836** out of an institutional affiliation between it and the Principality of Liège. Laid out according to the boundaries of the French département of Ourthe, it is characterised by the spirit of tolerance and freedom which prevails in our regions.

From the Principality, the Province of Liège also went on to preserve its coat of arms, which recall the former geographical boundaries within which, besides Liège and the Marquisate of Franchimont, the Duchy of Bouillon, the County of Homes and the County of Looz are also featured.



The existence of the provinces was formalised by the constitution of 1831; however, it took more than five years before the provincial law was promulgated on 30 April 1836. The first elections took place on 29 September of the same year and the first Provincial Council of Liège and the Permanent Deputation (now known as the provincial college) was set up immediately afterwards. Thanks to this provincial college and the authority of the Province as a whole, we saw **the grand departures of the Tour de France (2004 & 2012), the Giro d'Italia (2006) or even the Vuelta d'Espagne (2009).**

In 2008, the Province of Liège put on a big sound and light show in honour of the 1,000th anniversary of the death of Prince-Bishop Notger, remembering that “The farther back you can look, the farther forward you are likely to see.” (Churchill).

**In September 2015**, the Province produced and staged a unique showing of a major urban opera called “Karbon Kabaret”, which drew several thousands of people to Place Saint-Lambert in Liège.

**In July 2017, the Province was also behind the 19th visit to the region by the Tour de France on its two stages between Verviers and Liège.**

## ► Eye-catching figures

### *The superlatives*

The biggest Sunday market in Belgium: La Batte

The biggest and oldest Christmas Village in Belgium

The biggest and oldest still-active Belgian fair and the country's biggest festival: The October Fair

The country's oldest and most expansive stretch of land: the High Fens nature reserve

Europe's longest subterranean navigation route in the Remouchamps Caves

Europe's biggest Museum of Prehistory: the Préhistomuseum in Ramioul

The world's most attractive circuit: Spa-Francorchamps

The largest freefall simulator in the world: Fly-In!

The country's largest railway station, an architectural masterpiece: the Liège-Guillemins station

The longest staircase in Belgium: the Montagne de Bueren (374 steps)

The tallest building in Wallonia: the ultra-modern Paradise Tower in Liège (136 metres)

The largest number of ski slopes in the country (30)

The province with the highest number of

outdoor swimming pools in Wallonia (11)

Belgium's longest bar (21.6 metres long and... 20 beer pumps!): The Elvish Brewery

## 1/3

Tourism in Liège Province represents one third of Wallonia's entire tourism

## 1

Belgium's no. 1 inland port

Wallonia's no. 1 tourist destination

The only opera house in Wallonia

The only coal mine in Belgium that can be visited from its original shaft: Blegny-Mine (recognized as a UNESCO World Heritage Site)

The only stream in Belgium: the Ninglinspo

## 2

Two unique public health spas in Wallonia

## 3

Europe's 3rd-ranking river port

## 19

2017 saw the Tour de France cross Liège province for the 19th time since 1948.

## 30

30 recreational centres and parks

31

31 ski slopes: 5 alpine ski slopes and 26 cross-country skiing routes

80

80 heritage monuments open to visitors

84

84 municipalities

118

118 metres : (136 with antenna) La Tour Paradis, popularly known as the “Financial Tower”, located in the Liège-Guillemins railway station district, is the tallest building in Wallonia.

127

127 museums

181

181 hotels

354

354 guest houses

374

374 steps make up “The Beuren Mountain”, an immense staircase rising up right in the heart of the Historical Centre and leading to the ancient Citadel of Liège

600

600 kilometres of RAVeL (Réseau Autonome de Voie Lente), where motors are banished and cyclists are supreme, running through Liège province among other areas

659

659 gîtes

694

694 metres: Belgium’s highest point (Signal de Botrange) located in the Cantons de l’Est, in the east of the province

900

900 kilometres of cross-country skiing

3.862

3.862 km<sup>2</sup> : the province’s surface area

5.000

5.000 km of signposted walks

1.077.203

1.077.203: E203 inhabitants making up the province

2.500.000

2.500.000 visitors came to the Christmas Market in December 2016



## ► Themes

### ► Highlights

#### | Spa-Francorchamps Circuit

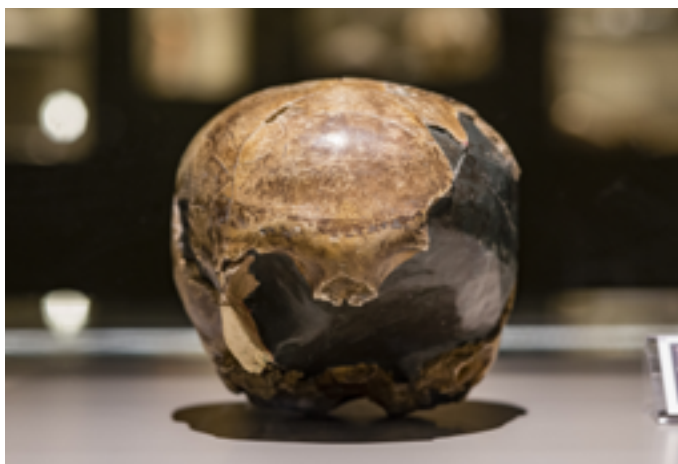


Adulated by numerous drivers and their teams for its natural dips and rises, right in the heart of Ardenne, Spa-Francorchamps is considered to be **the world's most attractive circuit**. Driving, speed, records, sensations – the circuit is synonymous with dizzying thrills. Step into a driver's shoes thanks to track introductions and days set aside for the “general public”. Make use of a day in Ardenne to go on a guided tour behind the scenes at the circuit, following it up with a restorative break at the Pit Brasserie as you enjoy a magnificent terrace with a panoramic view of the track.

(see “Circuit de Spa-Francorchamps” theme)

<http://www.spa-francorchamps.be>

#### | Das Préhistomuseum



#### | Nightlife



Liège is renowned not only for its welcoming spirit, but also for its partying and nightlife. There is, of course, Le Carré, a block of streets where pubs line up to offer Liège residents and tourists the opportunity to party till dawn all year round. However, we also advise you to take a seat on the terraces of the Place de Marché as soon as the sun casts its first rays. And then there are the events that take place throughout the year: the music festivals in Spa, Liège, Verviers... the numerous carnivals in Malmedy and Stavelot in particular, the Fêtes du XV août every 15 August in Outremeuse, the Fêtes de Wallonie, the Village Gaulois in the summer, Belgium's biggest Christmas Village in the winter and so many more things besides. Believe us, you won't be short of opportunities to enjoy yourself in Liège province. Festivities are everywhere.

In February 2016, the Préhistosite in Ramioul was turned into a 30-hectare museum in the forest of the Ramioul cave (a listed heritage site). Located in Flémalle, today it is **Europe's biggest museum devoted to prehistory**. There you will find twelve hands-on workshops, two unprecedented permanent exhibitions for exploring nature, heritage and science, a “mammoth” play park, an attractive shop, eight kilometres of forest walks, a training and research centre and an archaeology restaurant managed by a gastronomy expert throughout the different periods of history!

(see “Culture” theme)

[www.prehisto.museum](http://www.prehisto.museum)



## | Opéra Royal de Wallonie



The renovation and extension works at the Opéra Royal de Wallonie, built in 1820, have made way for a true temple of music equipped with some 1,030 extremely comfortable seats and, above all, a stage and machinery that are among the most high-tech in the world! The ORW is renowned for its excellence in interpreting the likes of Rossini, Bellini, Donizetti or Wagner and draws a large audience of Belgian, German, Dutch and French spectators.

(see “Culture” theme)

[www.operaliege.be](http://www.operaliege.be)

## | Blegny-Mine



A recognised UNESCO World Heritage Site, Blegny-Mine offers a rare attraction in Europe: descent into the subterranean galleries of a real coal mine (-30 and -60 m).

(see “Culture” theme)

[www.blegnymine.be](http://www.blegnymine.be)

## | La BOVERIE Museum



Located in the heart of the Parc de la Boverie, the former Musée d'Art et d'Art Contemporain (MAMAC) was built in 1905 in the context of the World's Fair, and became the “La Boverie” museum in 2016. Based around abundant Liège collections, the museum is supported by a collaboration forged with a prestigious partner: le Musée du Louvre in Paris.

(see “Culture” theme)

[www.de.laboverie.com](http://www.de.laboverie.com)

## | Stavelot Abbey



Stavelot Abbey, a Benedictine monastery founded in 651, testifies to the city's prestigious past as a former principality.

The present-day abbey houses three museums:

- The history museum of the principality of Stavelot-Malmedy.
- The Guillaume Apollinaire museum.
- The museum of the Spa-Francorchamps Circuit.

The Abbey also puts on temporary exhibitions. From April 2015 until May 2016, the famous **Anne Frank House** in Amsterdam was relocated there for the first time in its history.

(see “Culture” theme)

<http://www.abbayedestavelot.be/>

## | Guillemins Train Station



Finally, Liège residents have the use of a monumental station **designed by Santiago Calatrava**, which opened in 2009. A station with futuristic architecture that took ten years to build, directly accessible by motorway – and a draw for guided tours, its architecture is so impressive.

## | Thermalism



Liège province boasts **the only 2 spa resorts in Wallonia**: Château des Thermes de Chaudfontaine and the famous Thermes de Spa.

(see “Culture” theme)

## | The High Fens nature reserve



The Cantons de l’Est region, where German is also spoken, is located in the eastern part of Liège province. It is the site of the **High Fens nature reserve, the country’s oldest and most expansive natural park**. This natural gem is home to specific flora and fauna, which can be explained to you by the guides at the **Maison du Parc Naturel Hautes Fagnes-Eifel** (Botrange Nature Centre), which marks the departure point for well-maintained footpaths. However, the Cantons de l’Est can also be visited by **bicycle (18 themed routes)** or even by car, following the signposted itineraries.



## ► Themes

### ► Culture

A rich and varied heritage, a secular history, a favoured geographical location, dense communication networks and internationally renowned infrastructures are so many assets enjoyed by Liège province so that it can build up a sustained policy in the cultural field.

#### *Let's start with Liège...*

##### | The Grand Curtius museum complex



Liège has **one of the world's biggest collections of archaeology, weapons, religious art and Meuse art, decorative arts and glassware**. Some 5,500 items can thus be discovered at the Grand Curtius, which was renovated from top to bottom and inaugurated in 2009.

[www.grandcurtiusliege.be](http://www.grandcurtiusliege.be)

##### | The Museum of Walloon Life



Housed in the minor brothers' convent, the Museum of Walloon Life offers visitors a new look at Wallonia, from the 19th century to the present day. **Items, testimonies, films, photographs and documents have been collected for nearly a hundred years.** They are attractively presented under the use of modern scenography. Deconsecrated and attached to the museum, Saint-Antoine church is part of the minor brothers' convent and is integrated with the museum complex. Restored and transformed into a cultural space, it plays host among others to high-quality temporary exhibitions, such as the RECIPROCITY Design Triennial (see "Design" theme).

[www.provincedeliege.be/en/viewallonne](http://www.provincedeliege.be/en/viewallonne)

##### | Le Théâtre de Liège



Wallonia's leading stage, the Théâtre de Liège crosses borders for its **collaborations with prestigious international institutions**: the Festival of Avignon, the National Theatre of Korea, the Venice Biennial, and more... . Very large-scale renovations have resulted in a Théâtre de Liège located within the Société libre d'Emulation building, opposite the University of Liège, right in the heart of the city since the end of 2013. Aesthetically, its architecture favours timber, concrete and glass for a total area of 7,800 m<sup>2</sup>, blending neo-classicism and contemporary design. Columns, mouldings and gilding co-exist with Vitra furnishing designed by Jean Prouvé, a famous French designer.

[www.theatredeliege.be](http://www.theatredeliege.be)

## | Opéra Royal de Wallonie



The renovation and extension works at the unique Opéra Royal de Wallonie, built in 1820, have made way for a true temple of music equipped with 1,030 extremely seats and, above all, machinery that is **among the most high-tech in the world!** The ORW is renowned for its excellence in interpreting the likes of Rossini, Bellini, Donizetti or Wagner and draws a large audience of Belgian, German, Dutch and French spectators.

[www.operaliege.be](http://www.operaliege.be)

## | Mirror City

Built on the site of the former la Sauvenière swimming pool, where the architectural gamble was to keep the two basins intact, Mirror City is a place of life and permanent questioning, a terrain of encounters, discoveries and creations. It is a 21st-century space which, through history, speaks of the present and future. Besides the temporary exhibitions, two permanent exhibitions can be visited:

- “Never again!”, the new trail by Territories of Memory: an intense and moving tour of the Nazi camps, aimed at reisting a repetition of history (advised age: 11 and upwards)

- “Between galleries and forges, social emancipation”: put on the the Secular Action Centre of the Province of Liège, this exhibition evokes social struggles, among other themes.

Activities such as theatre, documentary cinema and conference events are also on the agenda there.

<http://www.citemiroir.be/en>

## | The Museum of Ansembourg

This private hotel, built in around 1740 for a banker, testifies to the refined lifestyle of the period by means of an evocative ensemble of specifically Liégeois architecture and decorative arts.

<http://www.liege.be/culture/musees/musee-d-ansembourg>

## | La BOVERIE Museum



Located in the heart of the Parc de la Boverie, the former Musée d'Art et d'Art Contemporain (MAMAC) was built in 1905 in the context of the World's Fair. In 2016, following major renovation and extension works, the MAMAC became “La Boverie” museum, destined in particular to host prestigious temporary exhibitions of international standing. Based around abundant Liège collections, the opening of La Boverie museum is supported by a collaboration **forged with a prestigious partner: the Musée du Louvre in Paris.**

<http://en.laboverie.com/>





## | Orchestre Philharmonique de Liège



Founded in 1960, the philharmonic is made up of around a hundred musicians and puts on almost 90 concerts per season, including about fifty in its place of residence, the Salle Philharmonique de Liège. The Hall enjoys an **acoustic standard that places it in top position among European concert halls.**

During the last ten years, the OPL has completed numerous tours abroad (Netherlands, France, Spain, Germany, Croatia, Switzerland, Austria, South America) and appeared in Europe's best auditoriums, all while affirming its presence in numerous Belgian towns. Frenchman Jean-Pierre Rousseau has been its general and artistic director since 1999.

[www.oprl.be](http://www.oprl.be)

## | The Prince-Bishops' Palace

The **Prince-Bishops' Palace of Liège or episcopal palace of Liège** is located on Place Saint-Lambert in the centre of Liège. The current Palace was built in the 16th century at the initiative of cardinal Érard de La Marck, on the site of a former building that was destroyed during the sacking by Charles the Bold. A new neo-Gothic wing was built between 1849 and 1853.

It is currently occupied by the federal Justice service, being also the seat of both the provincial college and council and housing the Governor's office.

## | The baptismal font of Saint-Barthélemy collegiate church

The baptismal font of the Saint-Barthélemy collegiate church is both aesthetically and technically a true masterpiece of Mosan art and is considered as one of the seven wonders of Belgium. The church of Saint-Barthélemy is distinctive for the imposing Ottoman style from the end of the 11th century to the late 12th century, with, in particular, its twin towers based on the Rhineland model.

## | Archéoforum



The Archéoforum takes you on a discovery of the Ardent City's development from its origins to the present day. By turn, with the aid of an interactive tablet or accompanied by an experienced guide, you will discover the traces of the first inhabitants in pre-history, the remnants of an impressive Roman villa, the crypt built on the site of the assassination of Saint Lambert, as well as the foundations of the various churches and cathedrals. **Brand-new educational scenography** presents never-before-seen archaeological items and dynamic recreations. Archaeological digs regularly take place on the site.

[www.archeoforumdeliege.be](http://www.archeoforumdeliege.be)



## | Aquarium-Museum & House of Science



A dive into the heart of biodiversity. At the Aquarium, view **more than 2,500 fish** in close-up: piranhas, clownfish, pike, dogfish, and more...

At the Museum, explore 20,000 testimonies of the animal realm: from the flea to the whale via the anaconda, spiders, the bear, the chimpanzee... There are also four nano-aquariums in the Coral Reefs Room and a Blaschka space at the Museum. The Maison de la science, for its part, offers an exhibition of holograms, optical illusions, minerals, IT terminals, and more.

<http://aquarium-museum.uliege.be/>

Even more at [www.liegetourisme.be](http://www.liegetourisme.be)

*In Liège province...*

## | Flémalle - **Le Préhistomuseum**

In February 2016, the Préhistosite in Ramioul was turned into a 30-hectare museum in the forest of the Ramioul cave (a listed heritage site). Located in Flémalle, today it is **Europe's biggest museum devoted to prehistory**. On site, you have access to twelve hands-on workshops, two unprecedented permanent exhibitions for exploring nature, heritage and science, an archaeology restaurant, a mammoth playing area, an attractive shop, eight kilometres of forest walks, a training and research centre... get ready to be amazed!

[www.prehisto.museum](http://www.prehisto.museum)





### | Seraing - *Les Cristallerie du Val Saint-Lambert*

When activity in the Val Saint-Lambert was at its peak, the crystal business comprised no fewer than 5,000 workers. The site was organised like a self-contained town, equipped with a school, hospital, enclosing walls and entry gate, workers' houses, foreign workers' accommodation, and more. Today, this tourist attraction allows visitors to discover the **pure crystal of the Val Saint-Lambert, reputed to be one of the world's most limpid** and the secular history of the Val Saint-Lambert, in the only crystal business open to the public in Europe.

[www.val-saint-lambert.com](http://www.val-saint-lambert.com)



### | Establishment of “La Chocolaterie” by Jean-Philippe Darcis

July 2016 saw the opening in Verviers of “La Chocolaterie”, by the famous Liégeois chocolatier Jean-Philippe Darcis. This is a vast 2,800 m<sup>2</sup> complex dedicated to chocolate, macaroons and pastries. A large-scale project that has manifested itself in the building of a four-storey building made up of a space for producing chocolates, macaroons and pastries (1,580 m<sup>2</sup>); a shop and tasting room on the ground floor with a fully south-facing terrace looking out onto the Crescendo site (420 m<sup>2</sup>); an educational area devoted to the history of chocolate and its making with a scenography entrusted to Jean-Christophe Hubert and Frédéric Matriche (550 m<sup>2</sup>); and “L'Académie Darcis”, dedicated to the private individuals and professionals who wish to join in with events led by both Jean-Philippe Darcis and other chefs of all specialisations (250 m<sup>2</sup>)

<http://darcis.com/chocolaterie/>



### | Sprimont - *Musée de la Pierre*



The museum is housed in the former power station of the Sprimont quarries, in the heart of the still-active enterprise. Through the use of tools, documents and old and recent finished products, visitors follow the various stages of stone-working and learn about how the craftsmen's life unfolded. Every year in August, around fifteen Belgian and foreign sculptors take part in the **Rencontres internationales de sculpture** on blue stone. This event showcases this stone, which is renowned for its technical and aesthetic qualities and its commercial markets.

[www.sprimont.be/touristes/musee-de-la-pierre](http://www.sprimont.be/touristes/musee-de-la-pierre)

## | Blegny-Mine - *A UNESCO World Heritage Site*



A recognised **UNESCO World Heritage Site**, a testimony to coal-mining activity in Liège, Blegny-Mine offers a rare attraction in Europe: descent into the subterranean galleries of a real coal mine. Following a film showing, visitors take the mine cage and descend into the galleries (-30 and -60 m). After that, tourists explore the coal separation and washing facilities, up to storage and shipping. The Mine Museum retraces eight centuries of coal exploitation. Tourist train rides, mini-golf, playing area, exploration of slagheap biotopes and a restaurant of regional flavours are also part of the site.

[www.blegnymine.be](http://www.blegnymine.be)

## | Stavelot - *Abbaye de Stavelot*



Stavelot Abbey, a Benedictine monastery founded in 651, testifies to the city's prestigious past as a former principality.

**The current abbey houses three museums:**

- **The history museum of the principality of Stavelot-Malmedy:** numerous explanatory panels, audiovisual presentations, various objects and three-dimensional recreations clearly illustrate the key periods that shaped the abbey's history.

- **The Guillaume Apollinaire museum.**

- **The museum of the Spa-Francorchamps circuit:** an exhibition presents the history of the racing circuit from 1896 to the present day. Unpublished documents and a constantly updated presentation of exceptional vehicles retrace the excitement of the competition, from the pioneers to the present day.

The Abbey also puts on temporary exhibitions. From April 2015 until May 2016, the famous Anne Frank House in Amsterdam was relocated there for the first time in its history. This was an unprecedented exhibition that allowed numerous visitors to reflect on the history of Nazi Germany, the Occupation during the Second World War in Europe, and the Shoah. Until 21 May 2017, discover "The Knights Templar. Between Myth and Reality".

[www.abbayedestavelot.be](http://www.abbayedestavelot.be)

## | Malmedy - *Malmundarium*



The Malmundarium is much more than a museum. It is a **space of excellence set up in the former Malmedy monastery**; it is dedicated to history, art and culture. Taking a hands-on approach, we learn about the city's industrial past in the leather and paper workshops, have fun in the carnival workshop and marvel at the works from the cathedral's treasure house. In the Historium, a timeline retraces the history of the city from its foundation by Saint Remacle in 648.

[www.malmundarium.be](http://www.malmundarium.be)



### | Amay - **Château de Jehay**



Château de Jehay, a listed part of Wallonia's outstanding heritage, is currently undergoing indispensable in-depth restoration. Two exhibition spaces are housed in the castle's dependencies. They are closed at the moment, but once they are reopened they will have abundant collections on show: "The Jehay Cabinet of Curiosities" and the subject of "Lady Moyra". The collections' Irish origins are linked with a tourist film, directed by Patrick Alen. Taken together, the collections enable a virtual tour of the castle. Access is still open to the domain's park, gardens and a remarkable one-

### | **The forts**

Twice – in a quarter of a century – Liège province had the painful "honour" of starting conflicts that drew Belgium and, beyond it, the whole of Western Europe and even part of the world into the destructive fury. The fortified position of Liège, established at the end of the 19th century, underwent the assault of August 1914 and then, rearméd and consolidated, that of May 1940. No fewer than ten forts can still be visited (including the fort of Barchon, Loncin, Battice, Aubin-Neufchâteau, and more), just like the other memorial sites represented by the citadel of Huy and the Allies' Memorial in Cointe (Liège). The numerous sites linked with the tragic events of the Rundstedt counter-offensive in the winter of 1944-1945 are well worth the detour (see "Memorial Tourism" theme).

### | **Modave Castle**

Modave castle was built in the Middle Ages on a rocky spur 200 feet above the valley of Hoyoux river. One can enjoy a magnificent view over the 1,100 acres surrounding nature reserve. A remarkable 17th-century stuccowork decorates the ceilings while the walls are covered with carved panelling, tapestries and large paintings. The furniture, with some unique 18th and 19th century pieces fits perfectly into this historic setting. An audio guide available in eight languages enables visitors to discover the special features of the 25 castle's rooms. Visit that exceptional place that belongs to the Major Heritage of Wallonia since 1993.

[http://www.modave-castle.be/infos\\_pratiques/langue\\_en](http://www.modave-castle.be/infos_pratiques/langue_en)

hectare kitchen garden, which is located within a walled enclosure.

<http://www.provincedeliege.be/en/chateaudeljehay>

### | Remouchamps - **Caves**



After exploring grandiose halls – true natural cathedrals – on foot, return by boat by **Europe's longest subterranean navigable route (700 m.)**. You can combine the tour with a visit to the Monde Sauvage Safari Parc, located close by (see "KIDS" theme).

<http://www.lesgrottes.be>



*But also...*

### | Huy, daughter of the Meuse



This little tourist town boasts history-laden, picturesque lanes with, in particular, old residences including the **convent of the Minor Brothers**, which is currently home to the **Municipal Museum of Huy and its varied collections**: fine arts, decorative arts, archaeology, ethnography, illustrations, and more. **The Notre-Dame collegiate church**, with its four shrines attributed to Godefroid de Huy, is also a cultural highlight of the town.

[www.huy.be](http://www.huy.be)

### | Verviers, Walloon capital of water



### | The town of Visé or City of the Goose



Visé is known for the charm of its old centre, but also for the **fêtes des Gildes**, a unique feature and local tradition just like “**Visé-style goose**”. The history and ceremonies of the three Guilds – the Royal Company of Ancient Crossbow-Makers, the Royal Company of the Ancient Harquebusiers and the Royal Company of the Frank Harquebusiers are evoked in three separate museums.

[www.vise.be](http://www.vise.be)

**The Wool and Fashion Tourist Centre** offers an exploration of the various stages of making woollen cloth, via a show trail called “From the Thread to Fashion”. Through machinery and testimonies from textile workers of the period, visitors are immersed in the atmosphere of the golden age of the Verviers textile industry, which is linked with its river, the Vesdre. In the former cloth factory in Bonvoisin, **la Maison de l’eau** has an interactive and dynamic aim. Audiovisual montages about the Vesdre and working with wool, a model of the Gileppe barrage, and the show trail take an educational look at the importance of water in the history of Verviers.

[www.verviers.be](http://www.verviers.be)

Even more at <http://www.liegetourisme.be/>



## ► Themes

### ► Design

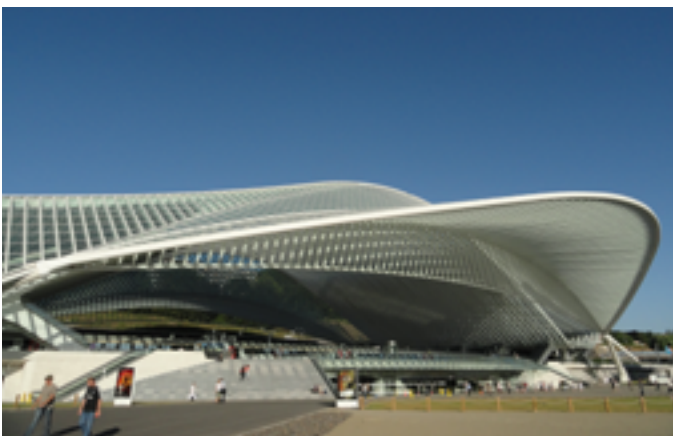
## Liège, Metropolis of Design

The city has taken on a new charisma through its multiple iconic projects, including the creation of the monumental Liège-Guillemins railway station – designed by Santiago Calatrava – or the renovation of the Opéra Royal de Wallonie and, more recently, of the Théâtre de Liège. For about ten years, architectural modernisation has been spectacular there, but creative energy, too, has been continuously making itself more and more manifest: trendy restaurants, creators of clothing, accessories or jewellery, art galleries, boutiques – design has become an established feature of Liège, turning the city into a true design metropolis. This is evidenced by the fact that, every three years, an international design festival moves into districts in all four corners of the city for a whole month.

### *Increasingly modern architecture*

Including :

#### | The Liège-Guillemins high-speed train station



A grandiose work of art with a Futurist allure, realised by the architect Santiago Calatrava. Inaugurated in 2009 after... **ten years of works**, it transformed the urban landscape and has assumed its place as the symbol of Liège's renovation. An architectural stroll, with or without guide, is worth the detour...



#### | Opéra Royal de Wallonie



Renovation and extension works at the Opéra Royal de Wallonie, built in 1820, have made way for a true **temple of music equipped with some 1,030 extremely comfortable seats** and, above all, a stage and machinery that are among the most high-tech in the world! The ORW is renowned for its excellence in interpreting the likes of Rossini, Bellini and Donizetti or Wagner, and draws a large audience of Belgian, German, Dutch and French spectators.

[www.operaliege.be](http://www.operaliege.be)

## | La Médiacité



La Médiacité is a 6.5-hectare commercial complex, inaugurated in 2009, that comprises around 160,000 m<sup>2</sup> of economic, cultural and leisure activities, its main theme being the audio-visual and the media. From a design point of view, the commercial centre is **coiffed by a monumental roof designed by Israeli artist Ron Arad**.

Concretely, la Médiacité is made up of a shopping centre (45,000 m<sup>2</sup>, around 130 shops and restaurants); a cluster of enterprises dedicated to the audio-visual and multimedia, called “Pôle Image de Liège”; 2,350 parking spaces (payable); an “entertainment” station run by national television broadcaster RTBF; television and film studios and an ice rink.

[www.mediacity.be](http://www.mediacity.be)

## | De Tour des finances

**La Tour Paradis**, often called the **Financial Tower of Liège**, is a skyscraper in the Guillemins railway station district of Liège. Its height of 118 metres – 136 with the antenna – makes it Wallonia’s tallest building. It accommodates some 1,100 financial workers based in Liège and replaces the two former buildings of SPF Finances which were demolished in 2015.

## | Cité Miroir



Built on the site of the former la Sauvenière swimming pool, where the **architectural** gamble was to keep the two basins intact, Cité Miroir is a space for citizenship and a cultural complex. Activities such as temporary exhibitions, permanent exhibitions, theatre, documentary cinema and conference events are on the programme there.

[www.citemiroir.be](http://www.citemiroir.be)



## | Le Théâtre de Liège

Wallonia's leading stage, the Théâtre de Liège crosses borders for its collaborations with prestigious international institutions: the Festival of Avignon, the National Theatre of Korea, the Venice Biennial, and more. Very large-scale renovations have resulted in a Théâtre de Liège located within the Société libre d'Emulation building, opposite the University of Liège, right in the heart of the city since the end of 2013. Aesthetically, its architecture favours timber, concrete and glass for a total area of 7,800 m<sup>2</sup>, blending neo-classicism and contemporary design. Columns, mouldings and gilding co-exist with Vitra furnishing designed by Jean Prouvé, a famous French designer.

[www.theatredeliege.be](http://www.theatredeliege.be)



## | Le Cinéma Sauvenière



The not-for-profit association les Grignoux, a cultural social economy enterprise, manages eight cinemas plus a café-gallery and brasserie on three Liège sites: le Parc, le Churchill and le Sauvenière, established in 2008. These cinemas showcase **the best recent films in the original version, with subtitles** (pre-premières with producers and film teams, special evenings, conference debates with participants representing associated themes, etc.) and organise about fifty concerts every year. The “Architecture moderne et contemporaine 1895-2014, Liège”, published by Mardaga in 2014, devotes several pages to each of these cinemas.

## | The Museum of Walloon Life

Housed in the minor brothers' convent, the Museum of Walloon Life offers visitors a new look at Wallonia from the 19th century to the present day. It has undergone major renovations that now give it **new outlooks** – at the design level in particular.



[www.provincedeliege.be/viewallonne](http://www.provincedeliege.be/viewallonne)

## Liège Designers

Including :

### | Atelier Ariane Lespire

Creation of hats and accessories

Ariane Lespire is a **creator of feminine accessories**: hats, scarves, stoles, bags, jewellery... so many items that make an accessory useful. This architect by training has a unique style that is full of colours and good humour...

[www.ariane-lespire.be](http://www.ariane-lespire.be)

### | Arqontanporin

Studio and shop, painting and sculpture



The space occupied by the artist couple is a studio-cum-shop devised to optimally present their work to the public. On a daily basis, here they make drawings, unique pieces created on soft PVC in black or white or colour which are hung on the walls as soon as they are dry. Every piece is an original.

[www.arqontanporin.com](http://www.arqontanporin.com)

### | Ann piron

Ceremonial style

In a semi-studio, semi-boudoir setting, Liège-based stylist Ann Piron fashions **wedding dresses and formal gowns** with clean and refined lines, accentuated with original details. A space that is worth the detour, as much for the premises' beauty as for that of the creations!

[www.annpiron.be](http://www.annpiron.be)

### | Filles a Papa

Style

Dreamt up and designed unassisted by two sisters, Filles A Papa is an **instinctive, frank and spontaneous and fashion line**. Their fashion is a message of freedom and independence, to be worn at a precise fit. Bounda-

ries are overcome between casual and elegant, masculine and feminine, refined and uncut. Abounding in contrasts and influences, Filles A Papa collections are simultaneously energetic, chic and uncomplicated. Day blends with night, styles are mixed up and clash, creating a modern alchemy for girls of today.

[www.fillesapapa.com](http://www.fillesapapa.com)

### | Delphine Quirin

Creation of hats and accessories



Delphine Quirin is passionate about hats and accessories. Her creations are harmoniously made in materials such as mohair or boiled wool, combined with leather, satin, vintage jewellery. **Her pieces are distributed in Liège, but also in Paris, Japan, Russia and the USA.**

[www.delphinequirin.be](http://www.delphinequirin.be)

## | REstore

Ecodesign store

REstore stands for the practising of ethical design that calls consumers to collective action. REstore offers a range of **Ecodesign furniture and lamps** designed by Benjamin Pailhe. Each piece, crafted in limited series

in the store's workshop, is manufactured in a unique way. Finally, you'll have noticed that REstore offers Ecodesign works at affordable prices, all the while favouring craftsmanship and ecologically responsible production.

[www.restoreddesign.be](http://www.restoreddesign.be)

## *Trendy boutiques – Design and fashion*

Including :

### | Sit On Design

Design, decorative items, furniture

Sit On Design is an **interior design store for furniture, lamps, decorative items**, original creations from time to time and a wealth of ideas for decorative gifts at modest prices. Belgian creators – Thierry Bataille, Benoît Deneufbourg, Jean-François Parisse, Three Little Monkeys and Sushi Art Factory – are duly represented there in pride of place. The boutique has its own online sales website.

[www.sitondesign.be](http://www.sitondesign.be)

### | Superflu – Scandinavian design

A second sales point has been opened at place du XX Août in Liège, entirely devoted to **indoor – outdoor furniture and lighting, with a selection of small objects**. Come to Galerie Cathédrale and explore new collections and labels mainly from Scandinavia, such as HAY, MAGIS, ETHNICRAFT, TREKU, GUBI, MENU, AIRBORNE, HOUE, in a brand-new and more contemporary setting.

[www.superflu.be](http://www.superflu.be)

### | Wattitude



Emmanuelle Wégria has travelled far and wide in order to track down and bring together **more than 250 creators, artists and producers from the Walloon scene** in the heart of the Ardent City. Fashion, accessories, design, gourmet specialities, musical discoveries, books and toys... Wattitude represents an arty, fun and colourful lifestyle but offers affordable prices.

[www.wattitude.be](http://www.wattitude.be)





## Galleries

ncluding :

### | Les Brasseurs



A must-visit cultural venue, this contemporary art gallery, established in Liège in 1993, is located right in the historical heart. Its aim is to **disseminate and promote contemporary creation** by means of solo, group and thematic exhibitions, conferences, lecture evenings, concerts and editorial projects.

[www.lesbrasseurs.org](http://www.lesbrasseurs.org)

### | La Maison des Métiers d'Art

La Maison des Métiers d'Art is a gallery managed by the Arts Professions Office and the Province of Liège. **Throughout the year, it puts on exhibitions** that highlight the applied arts, according to varied techniques and materials: textile, wood, ceramic, etc.

[www.opmaliege.be](http://www.opmaliege.be)

## *A guide for exploring all of these trendy places in the city: Shop'in Design*

This Shop'In Design trail in Liège comprises more than 70 addresses made up of trendy boutiques – Fashion and design, Liège creators, artisans, contemporary architecture, art galleries, fashionable restaurants and breweries, and more.

All these addresses are listed and presented in the Shop'In Design guide, published by the Tourism Federation of the Province of Liège (and available on <http://www.liegetourisme.be>), in a very handy pocket size and supplemented by a map outlining the route. This booklet comes in 4 languages (FR-NL-D-GB) and is an indispensable tool for strolling up and down the streets of the Ardent City in search of the trendiest places!

## *An international Design Triennial: RECIPROCITY*

**RECIPROCITY  
DESIGN.LIÈGE**

**TO DESIGN  
THE CHANGE,  
BE PART OF IT**

Formerly called the Biennale internationale du design de Liège, developed in 2002 at the initiative of the Province of Liège and the Provincial Office of the Art Professions of Liège (OPMA), the first edition of RECIPRO-

### | Espace 251 Nord



Located in the Saint-Léonard district, this venue is a remarkable example of industrial architecture. The association is devoted to the positioning and promotion of artists from Belgium and abroad. The centre gives its supported artists a professional boost by means of **temporary exhibitions and production workshops**.

[www.e2n.be](http://www.e2n.be)

CITY design Liège took place from 4 to 28 October 2012. The result: 25 exhibitions, 6 debates and conferences and more than 40,000 participants.

The latest edition of RECIPROCITY design Liège took place from 1 October to 1 November 2015. As always, the programme of events was spread right across the city of Liège.

Developed by internationally-renowned patrons, the main programme comprised:

- 4 exhibitions at iconic Liège locations: the Museum



of Walloon Life, B9 at ESA Saint-Luc Liège, Mirror City and l'Athénée Léonie de Waha;

- 1 event dedicated to documentary films for social innovation at Mirror City;
- 1 multi-purpose meeting point organised by the Fablab de Liège: le RELab;
- 5 exhibitions and events organised by invited institutions that are active in the design field in Belgium;
- 14 workshops linked with the main exhibitions, in the vast programme of events held at the meeting point or organised by invited associations;
- 3 international conferences: an Artek presentation by Marianne Goebel, new managing director of the Finnish brand; a round table on eating habits; a colloquium organised in collaboration with TEDxLiège;
- Around twenty exhibitions and fringe events as well as a play, helping to enliven cultural life in Liège during October;

For the first time, the Triennial also ventured beyond the province by forging a proactive link with other centres from the Meuse-Rhine Euregion and Belgium, under the banner of RECIPROCITIES: 7 organisations from Genk, Hasselt, Mons, Maastricht and Aachen shared the spirit and cross-border mission of RECIPROCITY with exhibitions and events developed for the occasion.

As in 2012, all RECIPROCITY events, colloquia and exhibitions were open free of charge.

Even more at <http://www.liegetourisme.be>



## ► Theme

### ► Walks and nature

#### *Walks in Liège province*

Liège province abounds in varied landscape. The country's top highlights, such as the fenlands – a biotope that is unique in Europe –, the great lakes, the mysterious forests, the steep-sided valleys of the Ourthe and the Amblève, Ardenne, the flowery orchards of the Pays de Herve, the marvellous Condroz – land of stones and torrents –, the vast plains of Hesbaye, one of Europe's most fertile terrains, and the valley of the Meuse that looks so different at Huy and Visé are sumptuous, harmonious and contrasting landscapes that are just a short journey away.



Liège province is now offering attractive trails, selected according to very specific criteria. Be it on foot, by bike, horse, car or **motorbike (13 signposted routes)**, possibilities for active relaxation abound, presenting different degrees of difficulty in order to appeal to as many people as possible.

Alongside the some **5,000 km of signposted walks** (more than 800 itineraries), the **13 RA-VeL cycle paths** (Réseau Autonome de Voies Lentes), pré-RAVeL, and new sections crossing Liège territory will no doubt be a boost to open-air tourism.

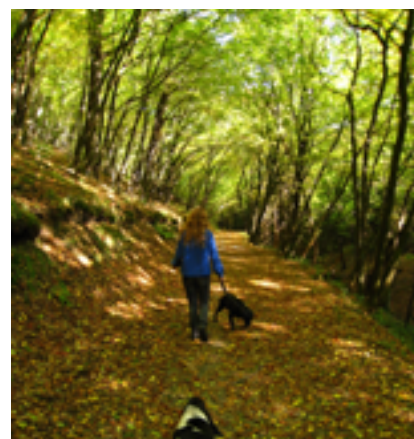
In this particularly favourable setting, the Tourism Federation of the Province of Liège (FTPL)

offers an alternative gentle mode of transport that is appealing and non-polluting and opens up horizons: **the electric bike. There is a range for hire at 6 tourist sites in the province:** the Museum of Walloon Life (centre of Liège), the Domaine provincial de Wégimont (Soumagne), Blegny-Mine, the Domaine de Palogne (Ferrières), Château de Harzé and Maison du Parc- Botrange (Robertville). On hiring bikes, tourists will receive suggested route itineraries starting out from the site concerned.

#### *Five tourist regions*

##### **| Around Aywaille**

The steep-sided valleys of the Ourthe and the Amblève form one of the most beautiful backdrops of the mysterious Belgian Ardenne. The site of the vale of Ninglinspo (the only rapids in Belgium) and the Fonds de Quarreux (rounded quartzite rocks obstructing the bed of the Amblève) are **listed parts of Wallonia's outstanding heritage**. Mainly rural, the Ourthe-Amblève can be explored on foot, by bike or on horseback. No fewer than **900 km of signposted paths** enable a getaway through forests, in the heart of typical villages or along rivers. Some **700 km of cycle trails** – cycle tourism on little tranquil and picturesque roads or mountain-biking on rough terrain and with spectacular backdrops – are also part of the package. Not forgetting almost **150 km of equestrian itineraries** amid rural and wild surroundings.





## | Around Huy



Located at the confluence of the Meuse and the Hoyoux, the Huy region draws its abundance from the **Hoyoux valley**, which leads towards the forests and landscapes of a slightly wild region. In Hesbaye-Meuse, set off on signposted trails. Around fifteen walks and a cycle trail allow you to tour a magnificent architectural, landscaped and natural heritage. The **Parc naturel des Vallées de la Burdinale et de la Mehaigne**, located in Hesbaye, is distinguished by its forest ecosystems, valley-bottom prairies and vast agricultural expanses. It offers 18 walking trails, 4 mountain-bike circuits and 2 cycle trails, all signposted.

## | Around Liège



In Liège, two steps away from the historical heart, **the paths on the slopes of the citadel** are privileged places where nature has been left intact and where the good life and good walks can be found with **13 km of trails and astonishing views across the city and the Meuse valleys**. On the Visé side, the **splendid Montagne Saint-Pierre international network of walking trails** is laid out between Geer and Meuse. These walks start from seven information points scattered across the cross-border territory at the crossroads of the Netherlands, Flanders and Wallonia.

## | Around Malmedy



The Cantons de l'Est region, where German is also spoken, is located in the eastern part of Liège province. It is the site of the **High Fens Nature Reserve, the country's oldest and most expansive natural park**. This natural gem is home to specific flora and fauna, which can be explained to you by the guides at the **Maison du Parc Naturel Hautes Fagnes-Eifel** (Botrange Nature Centre), which is the departure point for well-maintained footpaths. However, the Cantons de l'Est can also be visited by **bicycle (18 themed routes)** or even by car, following the signposted itineraries.

The region boasts a network of **24 e-bike hiring points** (electrically assisted bikes) and 12 battery charging stations. Incidentally, this is where **the famous Vennbahn** can be found. Considered to be one of Belgium's longest cycle routes on former rail tracks, the Vennbahn crosses through three countries: Germany, Belgium and Luxembourg. On a 125 km trail with an average incline of 2%, from Aachen to Troisvierges passing through the High Fens, you will be able to explore nature, the charm of the border regions, and historical anecdotes that revolve around the Vennbahn and its abundant past.

The Parc Naturel Hautes Fagnes-Eifel takes in 12 municipalities (Raeren, Eupen, Baelen, Jalhay, Stavelot, Malmedy, Waimes, Bütgenbach, Büllingen, Amel, St-Vith and Reuland) and is part of a German-Belgian cross-border natural park. Multiple landscapes can be explored: from the impressive Hertogenwald forest in the north, passing through the High Fens Plateau, the lakes or the valley of the Our.

In the winter, the region unfolds its charms by revealing to skiers **the country's most attractive snowy landscapes**. A network of well-maintained slopes and paths guarantees all the fun of mountain sports. Belgium's highest point is found there: the Signal de Botrange (694 metres).

## | Around Spa



The city of Spa enjoys an exceptional and particularly intact natural environment, due, in particular, to the harnessing of large quantities of mineral water. The focus, therefore, is on green leisure pursuits. In the land of the sources, a network of signposted walks or cycle trails takes visitors on an exploration of **very special natural treasures** (103 walks and 13 mountain-bike trails, all signposted).

## | RAVeL

The RAVeL network of trails is based essentially on service routes along waterways as well as on disused railways and former district routes. RAVeL is reserved for slow users of non-motorised forms of transport. These are mainly pedestrians, cyclists, persons of reduced mobility, skaters or even horseriders, when conditions permit.

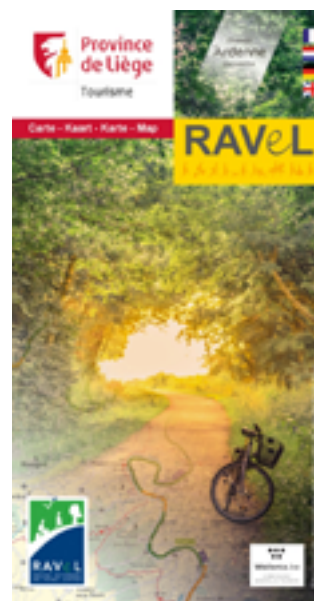
About fifteen years ago, the RAVeL was set up with a view to offering a network of pleasant, non-motorised itineraries, combining – across Wallonia – ways through green zones along navigable routes and secure urban crossings. Since then, sections have been added apace and have been getting more numerous every year, thus allowing users to circulate and explore Liège province totally undisturbed, without having to worry about road traffic – for more than 600 kilometres.

The Tourism Federation of the Province of Liège issues the RAVeL Map, which details the whole of the network and allows cycle tourists, in particular, to enjoy Liège province. This map has already been published in several editions. At issue is the continuous development of the RAVeL network, but mainly the enthusiasm of the public – mainly Flemish, Dutch and German – for these gentle excursion itineraries, totally free of motorised forms of transport. The map can be downloaded on the FTPL website [www.liegetourisme.be](http://www.liegetourisme.be)

## | Cross-border trails



The Three Borders region presents an undulating landscape with forest-covered craters and no fewer than 140 signposted paths and trails. With regard to tourism, the Three Borders region extends along the Dutch and German border, from the banks of the Meuse to the fringes of the Hertogenwald forest, and covers the valleys of the Gueule, the Gulpe and the Voer. **The meeting point of the three borders** is located at the “Trois Bornes”, on the edge of Gemmenich (B), Vaals (NL) and Aachen (D).



## | The chalky massif of Saint-Pierre Mountain

The chalky massif of Saint-Pierre Mountain is located at the border of the Netherlands, Flanders and Wallonia. This exceptional region will take you on an exploration of little picturesque villages, forts, castles, numerous waterways and outstanding nature.

Even more at <http://www.liegetourisme.be>

## | Ardenne Activity e-SCOOT



The e-SCOOT is a 100% electric all-terrain scooter offering different types of tours. You choose the difficulty level according to your age, your physical condition or personal wishes.

With the e-Scoot Discovery program, you make a ride to explore about 10 miles through little forests, on small country roads or on more technical routes. This is a funny, effortless and eco-friendly way to discover this wonderful region. All walks are accompanied by a guide.

[www.ardenneactivity.be](http://www.ardenneactivity.be)



## ► Themes

### ► Memorial tourism

DTwice – in a quarter of a century – Liège province experienced the tragic misfortune of starting conflicts that drew Belgium and, beyond it, the whole of Western Europe and even part of the world into the destructive fury. The “Fortified Position of Liège”, established at the end of the 19th century, underwent the assault of August, 1914 and then, rearmed and consolidated, that of May 1940. These forts are often well-preserved, although some are no longer accessible. However, no fewer than ten forts can still be visited, along with other memorial locations such as the Huy citadel, the Allies’ Memorial in Cointe (Liège) and numerous other sites associated with the tragic events of the counter-offensive of Rundstedt in winter 1944-45, which equally deserve attention.

As the word “tourism” comes up, it might not be trivial to insist on the fact that it, and “memorial”, are not contradictions in terms. On the contrary. Deeply respectful of the dramas that unfolded here and there – in Loncin or Chaudfontaine, earth is dug where dozens, if not hundreds, of human remains lie –, “memorial tourism” is both an opportunity to remember past sufferings and a reminder of our good fortune in living in a peaceful Europe today.

#### | Fort d’Aubin-Neufchâteau

Tests for the secret Röchling shells



Built from 1935 to 1940 in the context of the Fortified Position of Liège, Aubin-Neufchâteau fort was intended to block the Aachen-Visé-Liège access route and the surrounding valleys. It thus sealed off the North-Eastern front of the Fortified Position.

#### | Fort de Battice

Frescoes that speak a thousand words

The Battice fort is one of the four new forts built in the 30s, more precisely from 1934 to 1937. In May 1940, it was subject to a twelve-day siege under fire by heavy artillery and German aircraft. On 21 May, during an air raid, a bomb dropped by a Stuka hit a combat block on account of an unfortunate ricochet effect, killing 26 of its occupants. The extent of the damage can still be surveyed in the entrance to the little museum that is housed there.



#### | Fort de Barchon

Extensively rearmed and re-concreted for 1940



Built according to the Brialmont plan in 1888, Barchon was the northernmost fort, along with Pontisse. It was the first to capitulate, on 8 August 1914, following commandment problems and the threat of the garrison’s asphyxiation, after just 4 days of combat.

### | Fort d'Eben-Emael

One of the most powerful forts in Europe  
neutralised in no time

Built from 1932 until 1935, in the heart of Montagne Saint-Pierre, Eben-Emael fort appears in the form of a vast triangle bordered to the North East by the Caster trench. This impressive overhang, which accommodates a veritable subterranean city, was one of the most powerful fortifications in Europe.

[www.fort-eben-emael.be](http://www.fort-eben-emael.be)

### | Fort d'Embourg

Stormed twice under the devastating fire by the  
enemy artillery

Embourg fort has the particularity of being trapezoidal and also being one of the smallest, with a garrison of some 350 men. The scene of skirmishes between 6 and 12 August 1914, it was to be bombarded without interruption on 12 August at 1 p.m. and on 13 August at 8 p.m., the moment of its surrender.

### | Fort de Flémalle

There is no escaping half-tonne bombs!



A large quadrangular fort in the Fortified Position of Liège, Flémalle was one of the twelve defenders of the Ardent City conceived by Brialmont in 1888. Occupying a strategic position overhanging the Meuse and the Liège-Namur road, it was the scene of bitter fighting in 1914. It had to withstand attacks by Stukas in May 1940.

[www.fortdeflemalle.wix.com/fortdeflemalle](http://www.fortdeflemalle.wix.com/fortdeflemalle)

### | Fort de Hollogne

A small fortress from 1914

Hollogne fort is one of the six small forts which, with six other large complexes, formed the Fortified Position of Liège.

[www.fortdehollogneliege.be](http://www.fortdehollogneliege.be)

### | Fort de Lantin

An exploratory show trail: life in a fort



Hidden in a wooded massif in Hesbaye countryside, three kilometres away from its neighbour in Loncin, the little Lantin fort is the only one in the Fortified Position of Liège not to have been modified since 1914. It constitutes one of the last well-preserved vestiges of military architecture from the end of the 19th century.

[www.fortdelantin.be](http://www.fortdelantin.be)

### | Fort de Loncin

A necropolis for eternity...

Loncin fort is the most famous of the Brialmont forts. On 15 August 1914, under the blows of "Big Bertha", one of its two powder magazines exploded, crushing 350 of its defenders beneath its rubble.

[www.fortdeloncin.be](http://www.fortdeloncin.be)

### | Fort de Pontisse

The first to take a heavy pounding from Big Bertha

On a current surface area of just over 3 hectares, the fort was built between 1888 and 1892. It required 100,000 m<sup>3</sup> of concrete and the work of 500 people.

### | Fort de Tancrémont

The last stand

Inaugurated on 8 August 1937, Tancrémont fort was one of the new works in the Fortified Position.

[www.fort-de-tancremont.be](http://www.fort-de-tancremont.be)

### | Fort de Huy

A prison for hostages, communists and  
resistance fighters

Today, the fort has become a place of remembrance of the Second World War. The museum space enlightens visitors on prisoners' living conditions in the fort, daily life during the Occupation and the liberation of the town of Huy.

[www.pays-de-huy.be](http://www.pays-de-huy.be)

## | Allies' Memorial

### Dedicated to the fighters of 1914

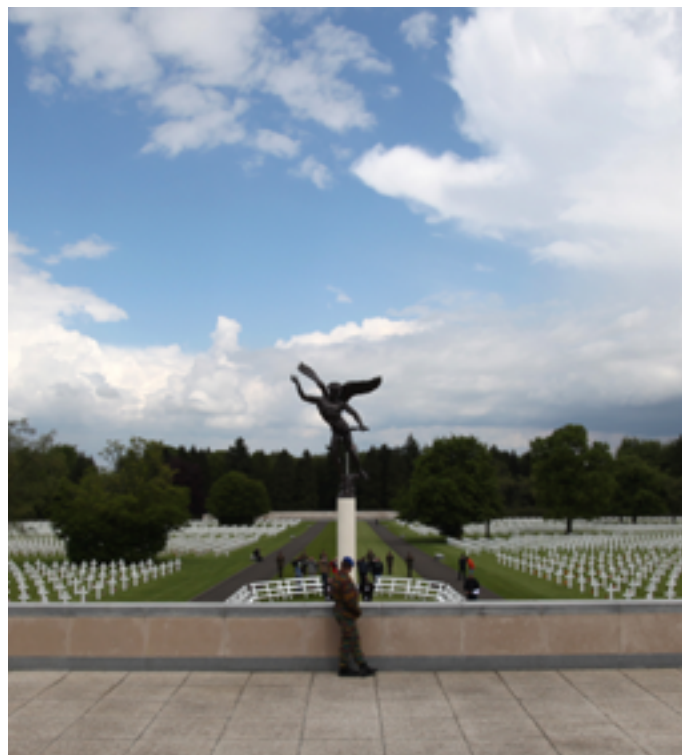
Overhanging the city of Liège, on the flank of the Cointe hill, the Allies' Memorial forms an impressive architectural ensemble. It is made up of a civil monument, the votive tower with a large esplanade at its foot, and a church that is often called a "basilica".



## | Henri-Chapelle memorial and American cemetery

This cemetery, where 7,992 American soldiers lie, extends across a surface area of 23 hectares. The memorial comprises a chapel and a museum. These two buildings are linked by an impressive colonnade adorned with the seals of the States and Territories of the Union. The colonnade's pillars bear the names of 450 missing whose remains were never found or could not be identified.

[www.abmc.gov/cemeteries-memorials/europe/henri-chapelle-american-cemetery](http://www.abmc.gov/cemeteries-memorials/europe/henri-chapelle-american-cemetery)



## | Neuville-en-Condroz memorial and American cemetery

On 37 hectares, the graves of 5,328 American soldiers are aligned in an immense Greek cross. These soldiers fell in Belgium, but also in Germany too, around Aachen and during the breach of the Siegfried line.

[www.abmc.gov/cemeteries-memorials/europe/ardennes-american-cemetery](http://www.abmc.gov/cemeteries-memorials/europe/ardennes-american-cemetery)





## | Memorial Museum of the Régiment 12e de Ligne Prince Léopold - 13e de Ligne

The museum exhibits its collections on an area of some 500 m². Via a chronological trail, it traces the history of a very illustrious elite regiment, from the Belgium Revolution of 1830 – from which the regiment originates – to the present day.

## | Musée 40-45 Memories

This private museum exhibits its own collections of objects found and acquired over the years and made up of military equipment, including devices and American objects as well as German propaganda (badges, weapons, photographs and maps). It also evokes civil life during WW2 (products from the period) and uniforms of the countries at war (army and resistance).

## | WWII Memory Museum

The WWII MEMORY MUSEUM is a museum dedicated to the history of the Second World War through uniforms and the equipment used by the 2 warring sides. Visitors will be able to dive back into this period of history thanks to 11 dioramas containing more than 70 mannequins that are fully equipped and staged in a very realistic way.

[www.wwii-memory-museum.com](http://www.wwii-memory-museum.com)

## | Baugnez 44 Historical Center

Opened in 2007, this is already considered to be one of the most attractive museums on the Battle of the Ardennes. The various major operations are explained there, 16 scenes are recreated and 120 display cases are on show.

[www.baugnez44.be](http://www.baugnez44.be)

## | December 44 Historical Museum

The December 44 Historical Museum is the fruit of the passion shared by two history fans: Philippe Gillain and Gérard Grégoire. The former collects military equipment and uniforms abandoned by the Waffen-SS. The latter, a La Gleize native, experienced the combats of 1944; he has always felt a drive to perpetuate the memory of the battle of La Gleize, to educate generations to come on the causes and effects of war through a historical heritage brought to life by vivid scenography.

[www.december44.com](http://www.december44.com)

## | Remember Museum 39-45

A fascinating museum, among the most interesting in its genre on account of the location's extraordinary human character – each unit of reconstruction (more than 70 mannequins!), each flag, item of clothing and object is associated with true stories and people whose names, face and story can be discovered.

[www.remembermuseum.be](http://www.remembermuseum.be)

## | Ensival Historical Museum

The Historical Museum in Ensival is a private museum intended to be seen by all! Its aim? Never to forget the sufferings and the lives lost for our shared liberty during the 40-45 war.

## | Musée Truschbaum

The Musée Truschbaum is located within the Camp d'Elsenborn. It traces the camp's history on the basis of numerous documents, slide shows and videos.

[www.mil.be/fr/unites/camp-elsenborn](http://www.mil.be/fr/unites/camp-elsenborn)

## | Ardennen Poteau'44 Museum

A military history museum on the Battle of the Ardennes (winter 1944-1945), it is located in the middle of the former battlefield of Poteau, a small village in the Belgian Ardennes. The museum is open to visitors under a new concept.

[www.museum-poteau44.be](http://www.museum-poteau44.be)

## | Ehrenfriedhof

The "Ehrenfriedhof" cemetery in Eupen comprises a memorial cemetery that is the final resting place of the military victims, among others, from the period 1914-18 and 1940-45.

[www.worldwartours.be/ehrenfriedhof-eupen.html](http://www.worldwartours.be/ehrenfriedhof-eupen.html)

## | "Memorial Tourism" brochure

More details and other locations can be explored in the brochure published by the Tourism Federation of the Province of Liège: "**Tourisme de Mémoire**", downloadable in four languages on the FTPL site

<http://www.liegetourisme.be>

Even more at <http://www.liegetourisme.be>



## ► Themes

### ► River tourism and bodies of water

#### | The Meuse in Liège province – River tourism



Departing from Namur: this is one of the Meuse's most attractive profiles, with riverbanks lined with dwellings at the foot of wooded valleys. The first town to mark arrival in the province of Liège is **Huy**. Huy offers the atmosphere of a tourist town, and is considered to be the gateway to the Ardennes for many Dutch and Flemish visitors. Landscape assets: Huy features rocky cliffs, forests and dwellings alongside the Meuse. Cultural assets: the Citadel, the Collegiate Church and the Fort. Shopping opportunities in the town centre.

Two ports are available to pleasure-boats and the RAVeL runs along the waterway, amid an attractive setting, to the village of Flône. On leaving Huy, the Meuse widens and becomes less cosy. The wooded slopes give way to growing urbanisation and industrialisation, the closer one gets to Liège.

**Visé** : the river atmosphere is very present and the Town of Visé lives with its river: harbour master's house, yacht harbour, Robinson Island... The river's infrastructure increases the closer one gets to the Netherlands. There is a "knooppunt" (node)-type tourist signalling system, and the RAVeL near the village of Lanaye is highly frequented on account of its lock, which is destined to become an attraction. The Tchéroix club allows a number of sailing activities on the body of water and Montagne Saint-Pierre is a not-to-be-missed place to visit.

#### **Val Mosan boat at Huy**

A trip aboard the Val Mosan allows tourists to explore some wonders of Huy's architectural heritage: fort, collegiate church, Maison Batta... One-hour mini-cruses on the Meuse and one-day cruises to Namur and Liège.

[www.pays-de-huy.be](http://www.pays-de-huy.be)

**Liège city** : at Liège, at the point of la Boverie park – a true Liège leisure scene –, the Meuse divides into two. Continuing along the Meuse, the urban landscape offers interesting perspectives and Liège offers a range that can be enjoyed directly from the river: the Maison de la Métallurgie et de l'Industrie, Médiacité, the yacht harbour and its harbour master's office, the Saucy footbridge and the access to the Outremeuse districts, the la Batte market, the historical centre, museums such as the Aquarium-Museum, Archéoforum, the Museum of Walloon Life, the Grand Curtius, the Museum of Fine Arts, Liège (BAL), the Ansembourg Museum, the RAVeL along the Meuse towards Tilff and Visé.



## | River ferries: Vauban and Atlas V



Two boats - “Vauban” and “Atlas V” - serve six stops located alternately along both banks of the Meuse every day from April to October, from 10 a.m. until 6 p.m. The stops are chosen for high population density and important tourist attractions: the major museum centres such as the Aquarium-Muséum, the museums La Boverie, Grand Curtius, the Museum of Walloon Life, but also the city centre, Outremeuse and Liège-Guillemins train station. Crossings are made every hour and the prices are fair: 1 Euro per stop and 8 Euro for the daily rate.

[www.navettefluviale.be](http://www.navettefluviale.be)

## | «La Barquerolle»

“La Barquerolle” is a boat that caters to the less mobile. It can accommodate 10 passengers, including 5 wheelchairs, and 2 crew members. This boat is equipped for all types of handicap (persons of reduced mobility, respiratory insufficiency, the visually impaired, etc.). It is available to clubs and associations but it is also open to the general public on one Sunday a month.

[www.ancrebleue.be](http://www.ancrebleue.be)

## | Tourist cruise “Bateau Prince Albert”

This vessel can accommodate 128 passengers thanks to its 3 storeys. It has two covered terraces, a bar and WCs. “Le Prince Albert” is exclusively for groups. Offering “tailored” cruises, the boat can be hired for all private or corporate functions.

[www.navettefluviale.be](http://www.navettefluviale.be)

## | «Pays de Liège» boat



Boasting 220 seats distributed over 2 covered decks and 1 “promenade” deck, the “Pays de Liège” offers a varied programme of themed cruises: sun-drenched cruises (Maastricht shopping, Montagne Saint-Pierre, Albert Canal, Huy, Cristal Discovery, and more), gourmet cruises (lobster, game, seasonal products) and events cruises (Mothers’ Day, 15 August, Beaujolais, etc.) between Huy, Maastricht and Visé. The boat can also be hired for events.

[www.bateaupaysdeliege.be](http://www.bateaupaysdeliege.be)





## LAKES

### | Bütgenbach lake

Worriken sport & leisure centre



The Worriken sport and leisure centre offers a **large variety of attractions to do with nautical sports and outdoor sporting pursuits**: sailing, swimming (lake or indoor pool), kayak, pedalo, canoe, archery, swingolf, sandy beach with a guarded bathing area, signposted hike around the lake (11 km), and more. The centre has a modern camp site and family chalets. In the summer: multi-sport lessons and events for children at Club Worriken.

<http://www.worriken.be/>

### | Warfaaz Lake



**Located at the gates of the town of Spa**, the lakeside is asphalted and walks there are easy. Pedalo hire, playing areas, a fishery that allows all types of fishing – except fishing by boat. Visitors can also enjoy a large terrace on the lakeside and catering points.

[www.lacdewarfaaz.be](http://www.lacdewarfaaz.be)

### | Robertville Lake

Centre of leisure pursuits



The lake, with a surface area of 63 hectares, was created to supply the Bévercé power station and the town of Malmedy with drinking water. An ideal place for relaxing as a family, **it offers opportunities to go swimming, enjoy a soft sandy beach**, and hire pedalos, “barquettes” and electric motor boats.

[www.robertville.be](http://www.robertville.be)

### | La Gileppe lake & barrage



The barrage, its monumental lion and lake attract visitors in search of walks, cycle rides or even horse rides. From the top of the **77 metre-high tower**, accessible by two elevators and consisting entirely of glass on its upper part, a superb view of the Hertogenwald forest can be enjoyed. Mountain bike and electric bike hire (around the lake in 1 h 15) is available, along with a playing area and an educational and play trail based around exploring nature (2 km). The panoramic restaurant and brasserie with terrace provide an opportunity to relax after visiting the barrage, for example (min.15 persons).

[www.gileppe.com](http://www.gileppe.com)

Even more at <http://www.liegetourisme.be>

## ► Themes

### ► KIDS

#### | Monde Sauvage Safari Parc



On a little train or in your car, you will discover a true African safari with giraffes, elephants, hippopotamuses, rhinoceroses, zebra, gnu... in a natural setting designed to allow the animals to thrive in semi-liberty. Also explore the South American space, the aviaries, the dome and its Maya temple, the large wild animals and bears, the North American forest, the monkey and lemur island, the owl house, the ostrich ranch, parrot, sea lion and birds of prey shows, a camel ride and lunch with the giraffes (on booking). Optional combined visit to the Remouchamps Caves.

[www.mondesauvage.be](http://www.mondesauvage.be)

#### | Domaine de Palogne

The Domaine de Palogne is an outstanding site beneath the walls of a fortified castle.

- Ferme de Palogne: **kayak descents, 3 12-km mountain bike circuits, walks, playground, mini-golf and tennis courts.** Tavern and restaurant.

- **Fortified castle of Logne:** its mysterious underground passages and museum housed at la Bouverie farm (objects from daily life).

- In the high season: treasure hunt and **falconry show.**

- **Musée de la Meunerie et de la Boulangerie:** ten minutes away from Palogne, in the former dependencies of Harzé castle, the museum of milling and baking offers an original itinerary through the history of bread. Baking workshop (Sundays and public holidays in the summer).

#### | Domaine Provincial de Wégimont



So many things to discover on one site: from 1/5 until 31/8, the complex offers several heated pools, a snack cafeteria, mini-golf, a boating pond and a fishing pond, 24 barbecue areas, a playground... The park is open free of charge in the off-peak season (arboretum, undergrowth etc.).

In the park, the accommodation centre welcomes accompanied groups with an educational, sporting, cultural, social and touristic aim throughout the year – overnight or by day – for training, colloquia and seminars. Organisation of “Nature” classes, camping and electric bike hire.

[www.provincedeliege.be/wegimont](http://www.provincedeliege.be/wegimont)



[www.palogne.be](http://www.palogne.be)



## | Parc Plopsa Coo



At the foot of the famous waterfalls, Plopsa Coo park offers around **twenty attractions that are in total harmony with the landscape**. The chairlift offers a panoramic view across the valley and park, while the little train takes you to the heart of the game park to explore the Ardennes wildlife. Don't miss the 2 bob sleigh slopes, the Coaster, Mega Mindy Flyer (70 metres high) or "Vicky The Ride", roller coasters where the wagons turn on their own axis. Other amusements there include a vast playground, mini-golf, karting track, shops, a restaurant, and more.

[www.plopsa.be](http://www.plopsa.be)

## | Domaine de L'Hirondelle



The Domaine de l'Hirondelle is a **vast relaxation and leisure** area offering a large playground, two swimming pools (one indoor and one outdoor, with chutes), barbecue areas, a pétanque area, two tennis courts, three fishing ponds and a self-service restaurant. Possibility of walks and cycle rides in the nature park and accommodation (bungalows, chalets, camping and hotel at the castle).

[www.lhirondelle.be](http://www.lhirondelle.be)

## | Freizeitzentrum Mont Mosan



Playground, sea lion and parrot shows, seal pool, exhibition on marine mammals, mini-golf, and pony rides are available to children.

[montmosan.be](http://montmosan.be)

## | Fort Aventure de Chaudfontaine

On an exceptional site dominating the Vesdre valley, buried deep within an enchanting maze of moats and galleries, the Chaudfontaine fort has been laid out in **Fort Boyard-style sports structures**.

[www.fortadventure.be](http://www.fortadventure.be)

## | Forestia



On a unique site, Forestia offers a **surprising combination of two parks: one of them an animal park** and the other an adventure park. The animal park provides an opportunity to discover animals from our climates in semi-liberty (300 animals distributed across about thirty species). The adventure trail offers 9 trails in the trees, 2 giant zip lines, one of which is 120 metres long, and more than 100 obstacles. Amusement guaranteed for big and small, sporty or otherwise! Not forgetting the big playground, mini-exhibitions including one about wolves, and the Forest'bar...

[www.forestia.be](http://www.forestia.be)



### | Le Château d'Ice



This indoor family free-time centre is a world of games and discoveries for children between 0 and 12 years of age.

[www.chateaudice.be](http://www.chateaudice.be)

### | Kidikids



Indoor playground, open throughout the year. Separate area for little ones.

[www.kidikids.be](http://www.kidikids.be)

### | For young... and old: Fly In, the biggest freefall simulator in the World!



Located next to Liège Airport in Bierset, the new leisure concept FLY-IN houses the world's biggest freefall simulator. Its totally circular wind tunnel has a diameter of 5.2 m and is 15 m high. The forced air inside achieves speeds of up to 300 km/h. Unique comfort and guaranteed thrills for all first-time fliers and professionals alike.

Accessible to all, from 5 to 99 years, FLY-IN allows you to discover the thrills of a parachute jump without having to jump out of a plane! As a family, among friends or with colleagues, enjoy a unique and original experience that will linger in your memory! Another advantage of this activity is that it's not weather-dependent.

A bar and restaurant with an unbeatable view of the simulator allows you to see friends in action and admire the professionals' progress

<http://fly-in.be>

Even more at <http://www.liegetourisme.be>

## ► Themes

### ► Thermalism

#### | Château des Thermes de Chaudfontaine



Very close to Liège, the Château des Thermes de Chaudfontaine is an outstanding location whose building dates from the 18th century and that unites wellbeing and dining enjoyment. This \*\*\*\* hotel is the ideal place for allowing yourself to be pampered in a serene and refined atmosphere and getting away in a prestigious setting where harmony and relaxation reigns. The exceptional warm water springs (34°) have been naturally bubbling up here for several centuries, representing a major asset for the spa centre, which was quick to make use of these benefits for the maximum enjoyment of visitors coming to take the waters. So make the most of the well-being guaranteed by high-quality facilities and a warm welcome.

[www.chateaudesthermes.be](http://www.chateaudesthermes.be)

#### | Wanze – Le Naxhelet Golf Club

Located on a plateau dominating the valleys of the Meuse and the Moselle, Le Naxhelet Golf Club boasts no fewer than 30 holes designed by the internationally renowned English architect Martin Hawtree. The Naxhelet castle-farm, for its part, has been transformed into a superb clubhouse, a restaurant open to all and a hotel comprising 33 rooms and 2 apartments. It also has a large spa. A selection of wellness rituals for face and body, along with one-day programmes, are on offer there. Products are free of chemical preservatives, parabens and GMOs. The day's programme can be individually chosen from among the treatments offered on the list.

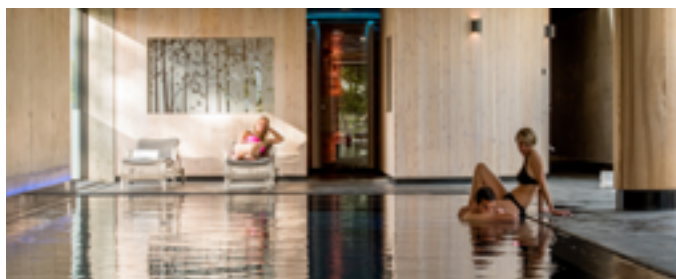
#### | Spa, a return to the sources



Spa means a “return to the sources”! The thermal baths city enjoys a reputation that far exceeds our borders, on account of its waters or even of its famous cultural and sporting events: Francofolies, Formula 1 Grand Prix, and more! This pretty town benefits **from an exceptional natural environment** with its forests featuring multiple walks, its Fen, is extremely pure air and numerous mineral and ferrous springs with beneficial virtues.

Today, the city of Spa is reforging its ties with its glorious past; testimonies to this are the thermal baths built on the Annette and Lubin hill and linked with the town centre by an inclined outdoor elevator. **Les Thermes de Spa**, a complex majestically opening out onto the Fens, claims to be at the intersection **between tradition and modernity** with, on the agenda, peat baths, balneotherapy treatments, the pleasure of aquatic games, relaxation or fitness programmes and, of course, beauty treatments.

[www.thermesdespa.com](http://www.thermesdespa.com)



[naxhelet.be](http://naxhelet.be)

## | Ovifat – Le Domaine des Hautes Fagnes

The “Domaine des Hautes Fagnes” hotel and restaurant is located in **the heart of Ardenne, in the High Fens Nature Reserve**. In a leafy park, it has 71 rooms, 9 meeting rooms, a wellness centre called “Vita Natura”, 3 dining rooms, a lounge bar, etc. **The “Vita Natura” spa centre, fully renovated in July 2012**, provides the opportunity to restore one’s energy in natural style thanks to wellbeing area tailored for rest and relaxation.

Intimate and welcoming at the same time, everything in this wellness centre has been conceived, devised and studied in order to offer a pure moment of wellbeing: **fully renovated indoor swimming pool, new sauna, hammam, and a jacuzzi combining design and high technology**. Everything has been conceived and created in order to guarantee optimum wellbeing for a thalasso or wellness stay.



[www.dhf.be](http://www.dhf.be)

## | Hombourg – Plaisir d’Être

“Plaisir d’être” centre for wellbeing welcomes you in a peaceful and calming setting. Here one can discover various treatments, accompanied by a touch of aromatherapy.

[www.plaisirdetre.be](http://www.plaisirdetre.be)

Even more at <http://www.liegetourisme.be>



## ► Themes

### ► Regional Products

#### | Le boulet à la liégeoise



Also known as “boulet sauce lapin” or “boulet sauce chasseur”, the Liège-style meatball is probably **the most typical dish of the province of Liège**. Concretely, it involves one or two large meatballs prepared on the basis of beef and veal mincemeat – or pork and beef –, breadcrumbs, shallots and parsley, to which Liège syrup and bay leaves are added during cooking. This sauce bears the name of rabbit sauce but does not contain rabbit. It is said to have got its name from its inventor, Mrs Géraldine Lapin. A real institution in Liège brasseries and chip shops, and known throu-

ghout Belgium, this dish is traditionally served accompanied by chips, (hence the phrase “boulets-frites”), mayonnaise and lightly seasoned salad or apple sauce. Like all traditional dishes, there are almost as many recipes as there are people who make them, each adding their own “little touch”.

#### | Liège Waffle



The Liège waffle is made on the basis of a dough fermented with yeast, like a standard waffle, but using pearl sugar. Traditionally, it has no corners and is eaten hot when served by itinerant traders.

#### | Chocolate

#### *Two master chocolatiers in Liège province:*

##### *Jean-Philippe Darcis*

At age 25, he opened his first atelier. A child of the Pays de Herve, he turned naturally to regional products. Heir to a long tradition of Verviers chocolate-making, he caught a passion for chocolate, set up his new laboratories, and launched his first tasting rooms. Known by his peers thanks to a know-how that allies tradition and creativity, **he represented Belgium at the World's Fair in Shanghai in 2010.**

##### *Jean Galler*

Jean Galler was born in desserts... From the family-run patisserie founded by his grandfather in 1930, he retains the pleasure of working with butter and cream. At age 16, he was drawn towards chocolate; this living substance fascinated him – he experimented, created and was soon delighting his first customers.

In order to perfect his craft and explore other flavours, he went on to study in Basel in Switzerland, then under Gaston Lenôtre in Paris. At age 21, he set up his business. 35 years later, the fundamentals have remained the same: passion for chocolate, love of work well done and permanent creativity.

Today, with a team of more than 100 workers, he conceives, produces and sells pralines, ices, pastries, filled chocolate bars and slabs of chocolate, Langues de Chat, spreads, little chocolates, and more...

Having forged his reputation in his region, Galler is now present across the Belgian market, at more than 2,000 sales points. Galler also has his own network of shops in Belgium, France, Japan, Dubai, etc.

La Chocolaterie Galler constantly innovates and is regularly honoured with official distinctions, the most illustrious of which is certainly that of “**Fournisseur Breveté de la Cour de Belgique**” received in 1994 and the Innovation award for the concept “CHOCOLAT-THÉ®” at the Franchise trade show in 2002.

## | Beer

Liège province also earns its gastronomic renown from outstanding brewing know-how. In total, there are 14 breweries (13 artisanal + the impressive Jupiler brewery) entirely making their own products. By opening their doors to the public (mostly by appointment), they invite beer-drinkers to discover their manufacturing secrets and sample their beverages. These breweries include:

### **Brasserie de l'Abbaye du Val-Dieu**



In order to perpetuate the tradition, the brewery, which is housed within the walls of the abbey (13th century), took its inspiration from the recipes used in the past by the brewer monks of Val-Dieu. The current beers are therefore **true abbey beers**, top fermentation, unpasteurised, simple, free of flavourings and brewed according to the old infusion method. Another particularity: here, **the master brewer is... a woman**. But tradition is not only found in these beers. Indeed, Aubel Country abounds in products that showcase the region's culinary traditions. Apples and pears that will give rise to cider and Liège syrup ripen in the surrounding orchards. Just as the green pastures where the cattle graze will produce exquisite cold cuts.

<http://www.val-dieu.com/en/>

### **Brasserie C**



Brasserie C, **located in the historical district of the city of Liège**, produces la Curtius, a complex and elegant blonde beer with a light taste and refreshing flavours. Made up of various barley malts and wheat, its base gives it a pleasant lightness while the composition of aromatic hops flowers lends it a subtly bitter, flowery and fruity flavour. Its unique and evolving taste is the outcome of several stages of fermentation, carried out over several months.

[brasseriec.com](http://brasseriec.com)

### **Brasserie Grain d'Orge**



Located in the little village of Hombourg, the “Grain d’Orge” brewery is a **microbrewery that specialises in making exclusive beers** (Hervoise, Aubel Double and Triple, 2 Nigauds...). The house beers are la Brice, a blonde, and la Joup, a brown, a white beer called La Canaille, along with a festive beer called La Grelotte. Grain d’Orge opens its doors to tours and offers tasting in its dining room on the brewery floor.

[www.grain-dorge.com](http://www.grain-dorge.com)

### **Brasserie de Bellevaux**



Created by a pharmacist wanting a change of lifestyle, la Brasserie de Bellevaux is proud of drawing its water, beer's main ingredient, from a natural source in the village. **The pure water of Ardenne**, with its gentle character, makes it possible to bring out all the ingredients' flavours and brew an amiable Brown and an elegant Blonde throughout the year. Two other beers can also be sampled as the seasons come and go: the sparkling White announces the spring and, at the end of the summer, when autumn makes its appearance, this fresh-tasting beer makes way for a Black with a pronounced taste and a creamy head. The beers of La Brasserie de Bellevaux are neither filtered nor pasteurised. They are “living” beers and are naturally slightly cloudy.

[www.brasseriebellevaux.be](http://www.brasseriebellevaux.be)

## Brasserie de Marsinne



La Brasserie de Marsinne opened for business at the beginning of 2013. The beer that is currently being produced there is Leopold 7. This brewery is the work of two young brewers and is actively and concretely committed to **sustainable production**: residual water management, 98% recycled packaging, no label (and therefore no glue)...

[www.leopold7.com](http://www.leopold7.com)

## | BeerLovers' café and shop

To discover all these beers, along with **hundreds more (750)**, make your way to the BeerLovers' café next to Liège City Hall. 14 different beers are served on tap.

[www.beer-lovers.be](http://www.beer-lovers.be)

## | "The Belgian Owl whisky", elected Europe's best whisky

Etienne Bouillon, a passionate distiller and initiator of the project, filled the first vat of the future Belgian Single Malt Whisky, The Belgian Owl, on 29 October 2004. The creation of this first Belgian Single Malt Whisky, made on the basis of barley grown in Belgium, caused quite a stir among whisky fans. Even back then, Jim Murray underlined the quality of production through his famous "Whisky Bible". The Belgian Owl has been available from specialist resellers throughout Belgium since 2008. These resellers promoted the product and shared a passion for this first Belgian whisky originating from crops grown in the country. 2010 and 2011 saw recognition of the quality of work delivered by The Owl Distillery, through both international contests such as "World Selection" or "Le Mondial de Bruxelles" and publications such as Jim Murray's Whisky Bible. Awards include: **Médaille d'Or 2010 and 2011 at the Mondial de Bruxelles; Grand Gold Quality Award 2010 and 2011 at World Selection; European Single cask whisky of the year 2011 with 95.5% in the Whisky Bible by Jim Murray, etc.**

[www.belgianwhisky.com](http://www.belgianwhisky.com)

## | Liège Syrup

Liège syrup is a product originating from cooking and **reducing apple and/or pear juice**. The addition of dates is becoming more and more standard. The result, af-

ter several hours, is a very dark brown paste, slightly translucent, which can be spread or added to certain recipes. It is also the essential element of the boulet à la liégeoise meatball.

## | Herve cheese



Herve cheese is a regional cheese from the area between the Vesdre and the Meuse, bearing the name of the main town in its region of origin: le Pays de Herve. It has been **made since the 15th century** on farms in the hedged landscape of Herve.

## | Pèkèt

The word pèkèt means "zesty" in old Walloon. According to other sources, this word is said to come from the language of coal miners. It no doubt originates from the Walloon word "pèke" which, in some regions of Wallonia, means juniper berries. In Wallonia, this name was therefore given to the eau-de-vie flavoured with the aid of these berries.

Pèkèt is a **grain alcohol distilled** in the Meuse region and more specifically in Liège province. It is flavoured with juniper berries, which give it this characteristic taste that is highly appreciated by connoisseurs, who drink it natural but chilled.

One of the places favoured by Liège residents – and tourists – for tasting it is **la Maison du Pèkèt** next to the City Hall, right in the centre of Liège. With lemon, strawberry and... chocolate. Take your pick.





### | Tarte au riz



This typical Verviers speciality gave rise to the birth of the Seigneurie de la Vervi-Riz in 1990 and conferred an important status on the region of Verviers, both in Belgium and abroad.

If tarte au riz originates in the Verviers region, it is probably thanks to the **richness of the milk** from the nearby Herve region and to farm-fresh eggs. These two raw materials are the pledge of the success of a good rice tart.

### | Liégeois salad



Liégeois salad is a salad composed of green beans, potatoes and diced bacon, which is eaten warm. It can be offered as a starter, but is most often served as the main – if not only – dish. Although now occasionally served in the summer, it is a culinary speciality typically served in the winter.

Although it is enough by itself, it is sometimes accompanied by sausages or slices of streaky bacon, or served on lettuce.

### | Le lacquemant



This is a fine wheat-based wafer, cut into two lengths, filled, and coated in candied sugar syrup fla-

voured with orange blossom.

### | Café Liégeois



Café liégeois is a cold dessert based on slightly sweetened coffee, coffee-flavoured ice cream and whipped cream.

For a little bit of (big) history, during the 1914-1918 war, the battle of the Liège forts gave the allies precious time. Although the city itself did not put up any resistance, the fighting by the Belgian field army supported by the forts prompted a lively interest in Liège and earned it the Legion of Honour awarded by France. In Paris, the name of café viennois was changed to café liégeois (also in Paris, rue de Berlin and its metro station were rechristened in favour of “Liège”).

### | La bouquette



La bouquette or vôte (in Liège Walloon) is a leavened pancake made with buckwheat flour, often enhanced with raisins.



Did you know? From Huy to Liège, no fewer than 19 vineyards run by passionate craftsmen, professional or amateur, are open for tours, mostly during the summer and by appointment.

Fancy sampling this abundance, perhaps still little-known but becoming more and more renowned? The Tourism Federation of the Province of Liège has published a map showing the “Route des Vins” that can be taken in its region. The map is available on its website, among other places.

[www.liegetourisme.be](http://www.liegetourisme.be)

**Province de Liège**  
Tourisme

**La route du vin en province de Liège**  
19 viticulteurs amateurs et professionnels, à découvrir...

The wine route in the province of Liège  
19 amateur and professional wine growers to be discovered...

**LEGÈNDE | KEY**

**INFO TOURISME | TOURIST INFO**  
[www.liegetourisme.be](http://www.liegetourisme.be)

**ATTRACTIONS TOURISTIQUES | TOURIST ATTRACTIONS**

**1 CLOS DE LA FONTAINE ET CLOS CALLOUX**  
M. Jean-Michel HOUTREAU  
Rue de la Fontaine, 10 - 4000 Huy  
T +32 (0)81 12 12 12 - F +32 (0)81 12 12 12  
www.houtreau.com

**2 CLOS DE LA CARBÈRE**  
M. Benoît LEBRECHT  
Rue de la Carrière, 10 - 4000 Huy  
T +32 (0)81 12 12 12 - F +32 (0)81 12 12 12  
www.lebrecht.be

**3 CLOS DE LA BUSSIERE**  
M. Jean-Maria SERRA  
Rue de la Buisserie, 10 - 4000 Huy  
T +32 (0)81 12 12 12 - F +32 (0)81 12 12 12  
www.serra.be

**4 CLOS D'ANTHETT**  
M. Jean-Maria SERRA  
Rue de la Buisserie, 10 - 4000 Huy  
T +32 (0)81 12 12 12 - F +32 (0)81 12 12 12  
www.serra.be

**5 CLOS DU BEAU ROSSER**  
M. Michel BRASSIERE  
Rue de la Buisserie, 10 - 4000 Huy  
T +32 (0)81 12 12 12 - F +32 (0)81 12 12 12  
www.brassiere.be

**6 CLOS BOIS MARIE (AO)**  
M. Jean-Maria SERRA  
Rue de la Buisserie, 10 - 4000 Huy  
T +32 (0)81 12 12 12 - F +32 (0)81 12 12 12  
www.serra.be

**7 LA CLOSERIE**  
M. Philippe CHARRIERE  
Rue de la Buisserie, 10 - 4000 Huy  
T +32 (0)81 12 12 12 - F +32 (0)81 12 12 12  
www.charrierie.be

**8 CLOS DU GERMI**  
M. Jean-Maria SERRA  
Rue de la Buisserie, 10 - 4000 Huy  
T +32 (0)81 12 12 12 - F +32 (0)81 12 12 12  
www.serra.be

**9 CLOS DES TROIS**  
M. Jean-Maria SERRA  
Rue de la Buisserie, 10 - 4000 Huy  
T +32 (0)81 12 12 12 - F +32 (0)81 12 12 12  
www.serra.be

**10 CLOS DES TERRASSES**  
M. Jean-Maria SERRA  
Rue de la Buisserie, 10 - 4000 Huy  
T +32 (0)81 12 12 12 - F +32 (0)81 12 12 12  
www.serra.be

## | “4 Flavour Routes in Liège Province”

Artisans who produce wine, but also beer, cheese and chocolate, can be explored in the brochure published by the Tourism Federation of the Province of Liège titled “4 Flavour Routes in Liège Province”.

No fewer than 15 tourable (micro) breweries, 23 artisan chocolatiers, 23 amateur and professional winegrowers, along with 23 artisan cheese-makers, are given pride of place in this 110-page edition. The **richly illustrated publication** also comprises **themed museums, anecdotes and extensive, hand-picked topical information**. In total, **84 producers** are described through the making and sale of their products of course, but also the possibility of touring their facilities (for some of them) and taking part in courses or workshops, etc.

The brochure is published in **four free monolingual versions** (French, Dutch, English and German). It can also be downloaded from the FTPL Internet site :

<https://www.liegetourisme.be/medias/documents/documentation/documentation-17FLAVROUT-UK.pdf>



## | 48 gastronomic confraternities in Liège province



A gastronomic confraternity is mainly an association of persons who, in a spirit of FRIENDSHIP and FRATERNITY, share a desire to rediscover their roots while STANDING UP for their region.

Every confraternity is the story of its region. Most of them are food-related, which means that they give pride of place to certain often-forgotten local or regional culinary customs or traditions, which are always a delight to discover. They also become the guarantors of the authenticity of one or the other recipe, one or the other manufacturing secret pertaining to a solid – or liquid – regional product...

From 1970 onwards, ten Liège confraternities defending the gastronomic traditions of Liège folklore created the Union des Groupements du Folklore Gastronomique de la Province de Liège. It is worth recalling that it was the first official organisation of confraternities in Belgium and that it served as an example for all the structures that followed. This Folklore Union has progressively attracted new members, in order to arrive at the current figure of more than 48 recognised confraternities.

Even more at <http://www.liegetourisme.be>



## ► Themes

### ► Religious Tourism

#### | Banneux Notre-Dame



An international centre of pilgrimage. Nearly 600,000 pilgrims from all countries make their way to this wooded site every year, in order to gather in one of the various chapels and stop at the “miraculous” source.

<http://www.banneux-nd.be/gb/accueil.gb.htm>

#### | Saint Paul Cathedral and its Treasure House



Founded in the 10th siècle, Saint Paul collegiate church became the new cathedral of Liège in the 19th century, replacing Saint Lambert cathedral which was destroyed during the Liège Revolution. The Treasure House of Liège presents an extensive trail that reveals the monument’s architecture and highlights the art and history of the former Principality of Liège: gold items, ivories, manuscripts, sculptures, paintings and textile collections. It is listed as an outstanding part of Walloon heritage.

[www.tresordeliege.be](http://www.tresordeliege.be)

#### | Saint Barthélemy Collegiate Church & Baptismal Fonts



The former Saint Barthélemy collegiate church is a testimony to Romanesque architecture in the Liège region. It is home to one of the universal masterpieces of Romanesque sculpture from 12th century, listed as one of the seven wonders of Belgium: brass baptismal fonts.

[www.st-barthelemy.be](http://www.st-barthelemy.be)

Even more at <http://www.liegetourisme.be>

## ► Themes

## ► Thrills !

### | Coo Adventures



Coo Adventures has been situated next to the famous Coo waterfall for over 20 years, a few yards from the tourist site Plopsa Coo, in a stunning Ardennes setting chiefly made of forests that is simply beautiful for any outdoor activity.

In groups, as a couple or a family, there is a pile of activities to be done: Wild animal park, quad riding, paintball, kayak, rafting, 4x4, karting, archery, climbing, ropes course, spelunking and more.

[www.coo-adventure.com](http://www.coo-adventure.com)

### | The Outsider Ardennes – Adrénalin (+12)



Are you seeking for escape and adventure? Then try our «Adrenaline» course! This challenge takes place in a 12-acre wide quarry. On the program: safe and supervised events such as abseiling, a 67-m long Indian bridge, a free jump from the rocks (18m freefall jump) or the mini spelunking course (spéléobox).

This activity is available from age 12 and up and is aimed at those who want to push themselves beyond their limits. Professional instructors will guide you and help you along the way.

<http://therock.be>

### | Skydive – the parachute jumping



Are you ready for one of the maddest life experiences? Take on the challenge of a parachute jump! In the company of your instructor, experience jumping from a plane at 12,000 feet of altitude, a free fall of nearly 45 seconds at 130 miles/h! Once the parachute is open, you can enjoy the breathtaking view of the city of Spa like a bird. Skydive Spa is renowned for the quality of its service and its well adapted infrastructure.

<https://www.skydivespa.be/en/>



## | First flight by paraglider or paramotor



Treat yourself to a first flight in paragliding or paramotoring and fly over one of Belgium's most beautiful regions! Enjoy a breathtaking view of Coe waterfall and its surroundings. On board the paramotor, you will also fly over the renowned Spa-Francorchamps F1 circuit, the High Fens nature reserve, Robertville and Bütgenbach lakes... You will be amazed and astounded! An activity accessible from the age of 6. Only two requirements: weighing between 25 and 90 kg... and benefit from favourable weather conditions!

<https://para-ardenne.com>

## | Track introduction session at Spa-Francorchamps circuit



A track-introduction session is a unique opportunity to discover the Circuit of Spa-Francorchamps from the inside, both as a passenger in a racing car in the hands of a professional driver, and then as the driver of your own car, while following in the trail of our Leading Car at low speed.

You will then take your place as a passenger in our race car and set off on the assault of the most beautiful Circuit in the world for two laps. Adrenaline and strong emotions await you.

[www.spa-francorchamps.be/en](http://www.spa-francorchamps.be/en)

## | For young... and old: Fly In, the biggest freefall simulator in the World!



Located next to Liège Airport in Bierset, the new leisure concept FLY-IN houses the world's biggest freefall simulator. Its totally circular wind tunnel has a diameter of 5.2 m and is 15 m high. The forced air inside achieves speeds of up to 300 km/h. Unique comfort and guaranteed thrills for all first-time fliers and professionals alike.

Accessible to all, from 5 to 99 years, FLY-IN allows you to discover the thrills of a parachute jump without having to jump out of a plane! As a family, among friends or with colleagues, enjoy a unique and original experience that will linger in your memory! Another advantage of this activity is that it's not weather-dependent.

A bar and restaurant with an unbeatable view of the simulator allows you to see friends in action and admire the professionals' progress

<http://fly-in.be>

Even more at <http://www.liegetourisme.be>



## ► Themes

### ► Circuit de Spa-Francorchamps

#### | Circuit de Spa-Francorchamps

Designed in 1921, the original 14.981 km track originally took on the shape of a triangle linking Francorchamps, Malmedy and Stavelot and used public roads open to traffic during normal hours. The 24 hours of Spa-Francorchamps were organised for the first time there in 1924, and the Belgian Grand Prix from the following year onwards.

At the time, the designers wanted to create a very fast circuit, and the planning undertaken over time reflects this thinking. Thus, the “U” bend

of the “old customs” (Prussian until 1871, German until 1920) was replaced in 1939 by a shorter and faster bend, the Raidillon de l’Eau Rouge, now the circuit’s most famous.

After several more planning measures and as time went by, the speeds achieved by the cars made the circuit more and more dangerous for the competitors’ safety. Incidentally, Dan Gurney used to say that this circuit “separates the men from the boys”.

The old track was abandoned for good in 1978.

The circuit currently under use has been modified several times and is now a permanent circuit of 7,004 developed metres. It is still a very fast and hilly circuit, resuming a section of the former track which presents characteristics that are appreciated by the world’s greatest drivers in the various categories and where cars are still able to exceed 320 km/h.

Spa-Francorchamps is also famous for its capricious weather. The circuit regularly finds itself varying exposed according to segments, dry and stable in some places while other sections are wet and slippery.

#### Eau Rouge

The most famous section of the circuit is the Raidillon de l’Eau Rouge, where the drivers’ challenge is to thoroughly negotiate this combination. Jacques Villeneuve often loudly proclaimed that he dared to cross the steep hair-pin bend with his foot on the floor. He proved it in 1996 by taking pole position but, on the other hand, came out of this slope very violently in 1998 and 1999. Five years before him, Alessandro Zanardi was also the victim of a major incident on the bend and had to keep away from racing for several weeks.

From October 2006 until May 2007, the circuit was modernised and its safety improved.



© Denis Colson Oneshot.be

#### Drivers’ comments

“It’s a course that has a long history. Most of the drivers love driving here, the circuit is very long and the bends are very technical. Finding the right balance is an essential factor at Spa, which is fairly complex. The weather is always unpredictable and most of the time changeable. Driving at Spa is a challenge and always exciting.”

- Robert Kubica -

“Spa is one of my favourite circuits. It’s a track that offers everything a driver can wish for. It’s one of the fastest and most difficult circuits in the world with its hills, fast bends, long straight lines and all that gives you a lot of pleasure at the wheel. It’s also a very beautiful circuit in the middle of the forest, but with weather that’s always unpredictable. In fact, the weather can play an essential role during the weekend, even when it’s summer. This is part of what makes Spa exciting. The Eau Rouge bend is legendary, even if we can easily take it today, when the slope is dry.”

- Jenson Button -

“It’s one of the traditional circuits in the calendar. It’s part

of the history of F1 and the atmosphere is special there. All drivers like driving at Spa, which presents one of the most appealing challenges on the calendar. The fast bends are impressive, especially Eau Rouge and Pouhon. It's always a real pleasure to drive an F1 on this circuit. ”

- Fernando Alonso -

“Like Monaco, Silverstone and Monza, Spa is one of the historic circuits I loved to watch on television when I was younger. It's also a great place, a circuit where you can push F1 cars to their limits. Coming through Eau Rouge, Pouhon or Blanchimont is incredibly thrilling. Your whole body is at the limit and you keep on pushing to go even faster. I think this circuit should never be off the F1 calendar. ”

- Lewis Hamilton -

<http://www.spa-francorchamps.be/>



## ► Themes

### ► Accessible Tourism

#### | Accessible Tourism

Persons of Reduced Mobility (PRM) represent a third of the population, either permanently or temporarily.

In 2007, the Tourism Federation of the Province of Liège acknowledged this fact and decided to act to the benefit of those tourists who are wheelchair-bound, have hearing impairment, visual impairment, difficulty understanding (cognitive deficiency, difficulties with language, reading and/writing), seniors or simply those... in push-chairs. Because “those who can do most can do the least”, **the Province of Liège was the first Tourism Federation in Wallonia to create a unit specifically dedicated to PRM.**

Its role: to survey the tourist sites in Liège province that offer optimum accessibility through analyses carried out in partnership with professionals; to inform the public about this accessibility in a clear and reliable way; to educate tourism service providers on PRM and offer recommendations with regard to arrangements that help them to get around.





## ► Themes

### ► Regular events

#### *Every Sunday*

##### | La Batte Market



La Batte market is a Sunday market located along the left bank of the Meuse. Dating from 1561, it is **the oldest market in the country** and, with its 4 to 5 million visitors every year coming from the region as much as from Germany or the Netherlands, it is **one of the biggest in Europe**.

#### *JANUARY*

##### | Liège - Festival de Liège

The Festival de Liège has established itself as a major event in cultural life, making the city's heart beat loudly with its programme of events, its **spaces for encounters and debates**.

<http://www.festivaldeliege.be/en-index.php>

#### *FEBRUARY*

##### | Liège - Vert Bleu Soleil trade show

The holidays and second homes trade show. In search of a change of scene, advice or news, anyone who is looking to choose their future vacation or getaway destination can **meet tourism sector professionals in person**.

<http://www.vertbleusoleil.be/012/en/Welcome>

##### | • Cantons de l'Est (Malmedy, Eupen, La Calamine): Carnival celebrations

In the Cantons of the East, carnival is mainly inspired

by Rhine traditions. The **parades on Carnival Sunday** or **"Rose Monday"** are unparalleled events; they are made up of multicoloured floats, fanfares, and more.



[www.eastbelgium.com](http://www.eastbelgium.com)

#### *MARCH*

##### | Stavelot - Laetare



In Stavelot, carnival is celebrated at Laetare. It owes its fame to the Blancs Moussis. Parodying the monks of the 15th century (who were banned from celebrating carnival), **les Blancs Moussis**, dressed in white capes and hoods and wearing long red noses, are surrounded by giants and ladders and floats blowing out confetti.

<http://www.laetare-stavelot.be/en/>

##### | Liège (odd years) - International Biennial of Contemporary Prints in Liège

The Biennial offers a **true overview of the art of etching** as it is practised throughout the world. Dozens of engravers from across the world move into Liège. A unique encounter with the infinite universe of etching.

[www.lesmuseesdeliege.be/biennale-internationale/](http://www.lesmuseesdeliege.be/biennale-internationale/)

## | Liège (even years) - International Biennial of Photography and Visual Arts

The International Biennial of Photography and Visual Arts showcases young emerging artists while inviting internationally renowned creators. Each edition is the opportunity to explore the creations of a guest country.

<https://www.bip-liege.org/en/expositions>

## APRIL

### | Liège - International Detective Films Festival

This festival is an established feature of Belgium's cinematic landscape, attracting a large number of enthusiasts and professionals in the genre every year. Eight films take part in the official competition selection and are under consideration for one of the four "Insignes de Cristal" awards (best film, script, actor and actress). On this occasion, the genre's full abundance and diversity are offered up to the expert eye and criticism of an international jury.

[www.festivaldeliege.be](http://www.festivaldeliege.be)

### | Herve - Cavalcade (Easter Monday)



With numerous international bands, local and regional floats and various other groups, this parade is without doubt one of the most sumptuous in Liège province. **50,000 people stream out onto the streets of Herve every year** to see the floats, which have the common feature of all being pulled by draught horses from the Ardennes and Brabant. This is an extremely colourful parade! The day closes with the traditional final rondo and fireworks, preceded by the famous pealing by Herve bell-ringers.

[www.cavalcadeherve.be](http://www.cavalcadeherve.be)

### | Herve - Bel'zik Festival

For six years already, every spring, Herve has been thrilling to the sound of pop, rock, French, electronic music... and welcoming groups coming from all over the world. To help it blow out its six candles, the organising committee wanted to get back to the festival's roots and has appealed to the **the cream of Belgian artists in order to offer an (almost) 100 % Belgian billing**. But while the Bel'zik Festival-goers come in huge numbers for the billing, they also come for the ambience, the friendly and family atmosphere that prevails in the Hall des Criées in Herve.

[www.belzik.be](http://www.belzik.be)

### | Liège - Liège-Bastogne-Liège



Created in 1892 by the Pesant Club Liégeois and the Liège Cyclist Union, Liège-Bastogne-Liège is the oldest of the cycle races still being contested, which earns it the name of the **Doyenne des Classiques**. A legendary race, one of a kind, it habitually crowns cycling's biggest talents.

[www.uciprotour.com](http://www.uciprotour.com)

### | Huy - La Flèche Wallonne



An international cycle race following the Amstel Gold Race and preceding Liège-Bastogne-Liège, La Flèche wallonne is one of the "Classiques ardennaises". Scaled 3 times on a route crossing Wallonia from west to east, **the famous "Wall of Huy"**, 1.2 km long and with impressive percentages touching on 22% in places, forms the high point of the race in its final climb.

[www.pays-de-huy.be](http://www.pays-de-huy.be)



## MAY

### | Liège - Les Epicuriales



**The biggest al fresco restaurant!** A concept, an original way to sample and discover the talents of our restaurateurs, each offering a menu limited to 3 or 4 dishes.

[www.epicuriales.be](http://www.epicuriales.be)

### | Liège - International Jazz Festival

A prestigious gathering of jazz artists from Belgium and abroad. All styles are present, from the most classical to the most adventurous!

<http://www.jazzalieu.be/en>

### | Chaudfontaine - Les Aqualines

Throughout the day, various activities and musical events, playing areas, and more. **Market of flavours and Eating Well** An invitation to stroll through the Market's aisles, getting to meet producers and artisans in an unusual way... and of course sample quality products there.

[www.sourceorama.com/events/aqualines/](http://www.sourceorama.com/events/aqualines/)

## JUNE

### | Liège - Village gaulois (end of June to mid-July)



The Gaulish village is an integral part of the 14 July festivities in Liège. Around pétanque areas, **around forty huts offer artisanal products** for sampling. The ambience there is characteristic and pleasant.

## JULY

### | Hamoir (Comblain-la-Tour) - Comblain International Jazz-Festival



An unmatched ambience, **Jazz and Blues greats**, music styles from Africa and elsewhere, Belgian and international discoveries can be explored in a convivial atmosphere. Dazzling concerts, children's playground, snack stands and rest areas are adjacent to the space dedicated to music in two marquees.

[www.comblainjazzfestival.be](http://www.comblainjazzfestival.be)

### | Liège - Liège sur sable

Sports, leisure pursuits, parties, activities, tastes and flavours of all kinds. **It's the beach in the city!**

### | Liège - Athletics meeting of the province of Liège

Numerous **top-level athletes, along with future athletic stars**, gather every year at Naimette-Xhovémont stadium, above Liège, in order to start the summer season and get ready for some international competitions.

<http://www.sport.be/meetingliege/2016/en/>

### | Spa-Francorchamps - 24h de Spa-Francorchamps

**The best endurance test exclusively reserved for the Grand Tourisme category.** Certainly one of the biggest meetings of the season with the Formula 1 Grand Prix.

[www.24hoursofspa.com](http://www.24hoursofspa.com)





## | Liège - Les Ardentes



An unmissable summer festival! A success that is based on a quality programme of both specialist and popular events, bringing together well-established and emerging top billings. Numerous international and Belgian artists appear one after the other for **four days of concerts where all trends can be found**: rock, electro, hip-hop, house, techno, drum'n'bass, soul, French chanson, folk, pop...

[www.lesardentes.be](http://www.lesardentes.be)

## AUGUST

### | Liège - "15 Août folklorique en Outremeuse"



The **unmissable festival right in the heart of the Ardent City!** The programme includes: flea market, popular games, concerts, various events, puppet shows, folklore dances, gunfire salutes, open-air mass with sermon in Walloon, parade of giants from Liège province and traditional burial of Mâti l'Ohé (a burlesque burial accompanied by fanfares, weeping widows...) to close the festivities.

[www.tchantches.be](http://www.tchantches.be)

## | Spa - Les Francofolies de Spa



Five days of festivities, **a dozen stages throughout the town, plus 250 concerts**. This Festival is the major musical event in French-speaking Belgium. The Francofolies billing is an astute blend of stars and emerging artists and dedicates half of its programme to the Francophone Belgian scene. French chanson, rock, pop, electro, hip-hop, slam... all music styles encounter one another in a convivial spirit for the audience's enjoyment.

[www.francofolies.be](http://www.francofolies.be)

### | Huy - 15 August festivities and fun fair

**Gathering of gastronomic confraternities and fireworks** fired from the Fort at 10 p.m. A big fun fair in the town centre for almost three weeks.

[www.pays-de-huy.be](http://www.pays-de-huy.be)

### | Spa - Formula 1 Belgian Grand Prix

A temple of automotive competition, the natural track of the Spa-Francorchamps circuit provides an extraordinary show for fans and unique thrills for drivers. It is considered to be **the world's most attractive circuit** – every driver dreams of making their name on this legendary track.



[www.spagrandprix.com](http://www.spagrandprix.com)

## SEPTEMBER

### | Liège - Retrouvailles

More than 300 associations, 4 events podiums, a host of permanent activities and always more than 50 hours of shows – the lively and colourful world of Liège associations gives the general public the chance to combine finds with... discoveries!

[www.retrouvailles.be](http://www.retrouvailles.be)

### | Liège - Fêtes de Wallonie



For several days, the crowds of visitors can enjoy the **Village of the Confraternities of the Union of Gastronomic Folklore Collectives of Liège Province**, musical events, places for strolling, concerts, and more.

[www.liegetourisme.be](http://www.liegetourisme.be)

### | Liège - Festival d'Orgue de Liège

Founded in 1998, the Liège organ festival aims to showcase the most beautiful organs in the Liégeois region. Every year, in the autumn, the Festival invites **top-flight organists** to play in an essentially Baroque repertoire. The FOL also welcomes choirs and, traditionally, the Chœur symphonique de Liège accompanied by the orchestra Convivium and renowned soloists.

[www.msj.be](http://www.msj.be)

## OCTOBER

### | Liège - October Fair



Liège fair is the oldest Belgian fun fair to be still continuing and **the biggest fairground in the country**. It's one of the big gatherings looked forward to by everyone, young and old. It's a variety show, where some 180 fairground attractions, each more magical and musical than the one before, set up business for 6 weeks in Avroy park.

[www.foiredeliège.be](http://www.foiredeliège.be)

### | Liège - Night-time stroll at the Citadel's hillsides



A few steps away from Saint-Lambert square... In the heart of the city's old districts... Liège at night.... On the slopes... For one evening, Liège unveils to you its lanes, courtyards, staircases, terraces, paths, meadows and orchards – open to all on a one-off occasion, subtly illuminated, joyously animated in enchanting light and a joyous festive atmosphere. The Slopes of the Citadel event comprises **60 monuments and 5 listed sites**, testimonies to Liège's old landscape through 28 hectares of extraordinarily well-preserved green spaces right in the heart of the city. In the softness of an October evening, follow the trail of magical, special, unusual walks **lit by more than 15,000 candles and enhanced by numerous musical and theatrical events**.

[www.lanocturnedescooteaux.eu](http://www.lanocturnedescooteaux.eu)



## | Liège - An International Design Triennial: RECIPROCITY



Formerly called the Biennale internationale du Design

### NOVEMBER

#### | Liège - Jumping international de Liège

Besides international riders, le Jumping de Liège showcases regional and national riders in the Halls of the Foires de Liège. **A surface area of 3,500 m2 reserved for professionals** is laid out in village form, allowing spectators to stroll undisturbed through a location designed for leisure and recreation.

[www.jumpingdeliege.be](http://www.jumpingdeliege.be)

### DECEMBER

#### | Liège - Liège, Cité de Noël – Village de Noël



Liège Christmas Village **is the biggest and oldest in Belgium**. Every year for a month, and boasting 200 chalets, it attracts a mainly foreign crowd of more than two million people to Liège. Events, food, big illuminated wheel and toboggan rides are on the programme.

de Liège, the first edition of RECIPROCITY design Liège took place in 2012. The most recent edition took place three years later, from 1 October to 1 November 2015 and, as always, the programme included events right across Liège. **Developed by patrons of international renown**, the main programme included **exhibitions, documentary films, workshops, conferences and more**, everything free of charge.

[www.reciprocityliege.be](http://www.reciprocityliege.be)

#### | Huy - Rallye du Condroz



The final leg of the Belgian championship, the Condroz rally puts on an **incredible show** throughout the various Specials, very often driven in some hellish conditions!

[www.condrozrally.be](http://www.condrozrally.be)



[www.villagedenoel.be](http://www.villagedenoel.be)

#### | Liège - European Circus

Every year, elegant horses, acrobats, jugglers, tightrope walkers, trapeze artists and clowns impress spectators for **two hours in a big traditional show**.

[www.europeancircus.com](http://www.europeancircus.com)



## ► Theme

### ► Liégeois celebrities

#### | Jean-Michel Saive

is a table tennis player, twenty-four times champion of Belgium, and was the world's top player for 515 days. He won the European Championship in the United Kingdom in 1994.

#### | Zénobe Théophile Gramme

born 4 April 1826 in Jehay-Bodegné, died 20 January 1901, was the inventor of the first electric generator, called the Gramme dynamo.

#### | Philippe « Bouli » Lanners

is a Belgian actor, scriptwriter, producer and director. He is the author of films such as «Les géants» or «Les premiers les derniers», with Albert Dupontel.

#### | Jean Galler

creator of the world-renowned chocolate brand, based in Chaudfontaine.

#### | Jean-Pierre Dardenne and Luc Dardenne

are two brothers who make their films together. Their cinema has made an international impact, thanks in particular to the Cannes festival where they won two Palme d'Or (for «Rosetta» in 1999 and «L'enfant» in 2005).

#### | André Gretry

born 8 February 1741 in Liège and died 24 September 1813 in Montmorency, composed several operas, among other works.

#### | Georges Simenon

born 12 February 1903 in Liège, died 4 September 1989 in Lausanne, was a writer specialising in crime novels who, among other characters, breathed life into the famous Inspector Maigret.

#### | Philippe Gilbert

is a cycle racer, world champion on road in 2012. He was the first racer in the UCI World Tour in 2011, and won the Liège-Bastogne-Liège in the same year.

#### | Elvis Pompilio

born in 1961, he is a famous fashion designer and milliner of internationally acclaimed talent.

#### | Pierre Kroll

is an illustrator, mainly known for his caricatures. He has worked with numerous periodicals, such as Vif, la Cité, Trends-Tendances, le Soir Illustré. His work can also be found on television or in the daily newspaper le Soir and the weekly magazines Télémoustiques, Ciné Télé Revue, etc.

## ► Theme

### ► Liégeois celebrities

#### | Marie Gillain

is a Belgian actress, born 18 June 1975 in Rocourt, near Liège. At a very young age, she caught an enthusiasm for the world of show business and took part in an theatre expression workshop as a teenager. She went for her first opportunity in the world of cinema in 1989. She made her début at the age of 15, in the film «Mon père, ce héros», where she played alongside Gérard Depardieu and earned her first nomination at the Césars. 1994 was marked by her meeting Bertrand Tavernier, who offered her a role in his upcoming film «L'Appât». This role earned her another nomination at the Césars and the Romy Schneider Award. In the subsequent years, she notched up roles in such varied genres as comedy, drama, adventure or crime. She has also been the face of French perfumers Lancôme since 1998. From 2008 onwards, Marie Gillain became a goodwill ambassador at the NGO Plan Belgique, which works on behalf of children in emerging countries.

#### | Georges Jobé

born in January 1961 in Retinne, he was the youngest World Champion in motor cross when, at the age of 19, he earned the 250 cm<sup>3</sup> title on an official Suzuki in 1980. The Liège resident was at the top of his sport for 12 seasons, before winning his final prize in 1992. In 2011, he was diagnosed with leukaemia, which finally carried him off in December 2012 at the age of 51.

#### | David Goffin

born on 7 December 1990 in Liège, is a tennis player who turned professional in 2008. In 2012, when he featured on the final scoreboard at Roland-Garros as the lucky loser, he rose to the last sixteen the first time he took part in the Grand Slam. He garnered four ATP singles titles at the Open in Kitzbühel, the Open in Moselle in 2014, the tournaments in Shenzhen and Tokyo in October 2017. In 2016, he rose to the semi-finals of the Indian Wells tournament by beating, among others, Stanislas Wawrinka (no. 3 in the series and number 4 in the world). It was his first victory in a top 5 and his second in a top 10 (following his victory against Milos Raonic in the Basel tournament in 2014).

#### | Axel Witsel

The international footballer Axel Witsel was born on 12 January 1989 in Liège. After winning with Standard de Liège and then playing for Benfica Lisbon and Zenith St. Petersburg, he became the front runner in Borussia Dortmund's midfield, at the top of Bundesliga. He has already been selected a 100 times for the national Belgian team.

## ► Online sales site: [www.liegetourisme.be](http://www.liegetourisme.be)

Since March 2015, the Tourism Federation of the Province of Liège has been marketing tourist products from its region thanks to a Receptive Tourism Department. The department is a pivotal point centred on three fronts: business tourism, groups, and individuals. Besides traditional promotion activities, showcasing Liège province's tourism assets is now taking place under the banner of MICE, sales pitches with tour operators and coach companies, as well as through online trading.

### | [www.liegetourisme.be](http://www.liegetourisme.be): the online booking site of the FTPL

In the light of the observation that individual tourists have mainly become Internet surfers, the Tourism Federation of the Province of Liège has decided to set up a "touristic marketplace", bringing the offer that can be found and booked in its region (accommodation, activities, tours, etc.) together on a single site: [www.liegetourisme.be](http://www.liegetourisme.be). This is a virtual store that offers users one sole secure payment for the entirety of their purchases or bookings, whatever the number or type of products they put in their baskets – so that visitors can put their stay together à la carte, with total ease.

This marketplace means that tourists:

- have a varied range for every type of tourism trade: hotel, gîte, campsite, museum, attraction, event, show, shop... on a single site;
- have the range available on a date that suits them, in other words in real time and bookable in a few clicks;
- put together their stays according to their preferences by simply adding what they want to their "basket";
- only make one single secure payment for the whole of their purchases or booking, regardless of the number of products.



[www.liegetourisme.be](http://www.liegetourisme.be) - The unexpected destination !

Département [www.liegetourisme.be](http://www.liegetourisme.be) de la Fédération du Tourisme de la Province de Liège

Caroline CASSARO and Catherine DELFOSSE

Place de la République française, 1 - 4000 Liège

Tel: +32 (0)4 279 56 01 - Tel: +32 (0)4 279 55 86

[caroline.cassaro@provincedeliege.be](mailto:caroline.cassaro@provincedeliege.be)

[catherine.delfosse@provincedeliege.be](mailto:catherine.delfosse@provincedeliege.be)

[incoming@liegetourisme.be](mailto:incoming@liegetourisme.be)



## ► Business Tourism

### | Business tourism

Since the Receptive Tourism Department was set up, **the Tourism Federation of the Province of Liège has been recognised by regional and Community authorities as THE Convention Bureau (CVB) of Liège province** – that is to say, the sole contact partner in matters of business tourism for the whole of the province. In this regard, among other measures, the FTPL canvasses for clients in local companies, in partnership with economic stakeholders in the province and region; takes part in international trade shows such as IMEX in Frankfurt (May) or EIBTM in Barcelona (November); organises targeted educational tours and press travel; has set up a MICE club in which promotions are realised, etc.

Progressively, the number of overnight stays generated by the organisation of conferences, meetings and seminars in Liège is approaching 165,000 units for the

year 2014, compared to about 140,000 in 2010. This puts **the Ardent City in first place in Wallonia** behind the Brussels-Capital region and the main Flemish towns. It is interesting to note the recent entry of **Spa into the top 20 of Belgian towns** for business tourism, with some 74,000 overnight stays. It's therefore no coincidence that the Convention Bureau of the FTPL is called "**Liège-Spa Business Land**"! Indeed, these two MICE destinations of the province of Liège are very different, but they also complement each other perfectly.

Besides its advisory role, the FTPL's Convention Bureau intends to continue its marketing logic and is offering a "**turnkey**" **service to companies** wishing to entrust it with the full organisation of an event. In addition to not worrying about a thing in return for an indicated, approved and controlled budget, companies will receive just one invoice.

Département MICE de la Fédération du Tourisme

Candice MICHOT and Souad MIMOUNI

Place de la République française, 1 - 4000 Liège

Tel: +32 (0)4 279 56 42

Fax: +32 (0)4 237 95 78

[candice.michot@provincedeliege.be](mailto:candice.michot@provincedeliege.be)

[incoming@liegetourisme.be](mailto:incoming@liegetourisme.be)

<https://mice-en.liegetourisme.be>



## ► Groups

### | Groups – FTPL, the first port of call for marketing

Aware of the general public's interest in regions that are bigger than the province of Liège alone, such as Destination Ardenne – situated in three countries (Belgium, Grand Duchy of Luxembourg and France) – or the “Heart of Europe” destination, which also comprises Belgian and Dutch Limburg and the region of Aachen, FTPL has offered itself to its partners as the first port of call for marketing products aimed at groups. It can also look after sales pitches and monitor queries. In order to do this, the FTPL now has an effective team at the service of tour operators and coach companies, which can inspire or suggest stays/excursions through 3 destinations: **Destination Ardenne, the Heart of Europe** and, of course, **Liège province**.

The FTPL is now offering a varied and flexible range to meet the needs of all groups.

### | Destination Ardenne

Example itinerary:

#### Day 1 – Namur (BE)

Tour of a snail farm, with tasting (1h30)

Lunch at the citadel in Namur

Tour of the citadel (2h)

Dinner and overnight stay in Namur

#### Day 2 – Namur / Charleville-Mézière (FR) / Sedan

Visit to Charleville-Mézières (1h30)

Lunch on location

Tour of the Fortified Castle of Sedan (1h30)

Tasting of “La Sedane” beer

Dinner and overnight stay in Sedan

#### Day 3 – Sedan / Bouillon (BE) / Orval / Clervaux (LU)

Tour of Bouillon Castle (1h30)

Lunch and tasting of “Petite Orval” beer

Tour of Orval Abbey (1h30)

Tasting of Luxembourgian wines

Dinner and overnight stay in Clervaux

#### Day 4 – Clervaux / Liège (BE)

Tour of the exhibition “The Family of Man” (1h30)

Lunch on the road

Coach tour of Liège (1h)

Surprise tasting of Liège desserts

Tour of the Museum of Walloon Life (2h)

Dinner and overnight stay in Liège

#### Day 5 – Liège / Pays de Herve

Tour of a cheese dairy with tasting (1h30)

Tour of the brewery of Val-Dieu Abbey with tasting (1h15)

Dinner of local flavours at the abbey

Tour of a syrup factory with tasting (1h15)

#### BENEFITS

Accompanying guide (FR/EN/NL or DE) throughout the stay (optional)

Free for the guide and driver



Day 1 – Hoensbroek (N) / Epen / Liège (B)

Tour of Hoensbroek Castle (1h30)

Lunch in a room at the castle

Departure for Epen

Meeting with a winegrower from the “Le Coq Frisé” domain and tasting of white wine (2h)

Dinner and overnight stay in Liège

Day 2 – Liège / Hasselt / Liège

Guided tour of Liège by coach (1h)

Culinary explorations in Hasselt, capital of taste (2h)

Lunch in the centre of Hasselt

Tour of the Archicommanderie d’Al-den-Biesen and its gardens (2h)

An original, gourmet guided tour of the subterranean galleries of Blegny-Mine... Aperitif and starter underground (1h30) and the rest of the meal on the surface!

One night stay in Liège

Day 3 – Liège / Stolberg (D) / départ

Walking tour of the historical heart of Liège (2h)

Exploration of the historical heart of Stolberg and its medieval castle (2h)

Supper in the historical heart

BENEFITS

Accompanying guide (FR/EN/NL or DE) throughout the stay (optional)

Free for the guide and driver



**| Liège province**

Of course, we also offer the opportunity to explore the one and only province of Liège. To start with the city of Liège, where spectacular renovations have extensively changed the landscape, among which the Liège-Guillemins high-speed train station (S. Calatrava), the Opéra Royal de Wallonie, Mirror City, the Médiacité, Théâtre de Liège... And finally Liège, a millennia-old city and daughter of the Meuse, also captivates with its history and river cruises! A few kilometres away from Liège, the prestigious Spa-Francorchamps circuit hosts legendary races, and the splendid Stavelot Abbey is home, among other attractions, to the track’s museum. Blegny-Mine, a UNESCO World Heritage site, and the Cristalleries du Val Saint-Lambert testify to our ancestors’ abundant industrial past and know-how. The castles of Jehay, Modave and Reinhardstein rise up majestically at the bend of a road. As for nature enthusiasts, they will be enchanted by the Remouchamps Caves, the longest subterranean navigable route in Europe, the duckboard paths of the Cantons de l’Est, the Fens, and more... Renowned for being bon viveurs, Liège residents are also sophisticated gourmets. Sampling regional products and culinary creations is a must for understanding how much (waffles, pèkèt, chocolates, beers...)

Example itinerary:

Day 1 – ... / Liège

Coach tour of Liège (1h)

Tour of the auditorium and behind the scenes at the Opéra Royal de Wallonie, aperitif in the opera Foyer (1h30)

Lunch of local specialities



Tour of the collections at Grand Curtius Museum (1h30)

Guided tour of “Brasserie C” brewery with tasting (1h15)

Dinner and overnight stay at a hotel in Liège

Day 2 – Liège / Stavelot /Spa-Francorchamps / Malmedy / Eupen / ...

Tour of the circuit museum at Stavelot Abbey (1h30)

Mini-tour on the Circuit de Spa-Francorchamps

Visit to the Malmundarium (1h30)

Cake & coffee

Tour of the town of Eupen (1h)

#### BENEFITS

Accompanying guide (FR/EN/NL or DE) throughout the stay (optional)

Free for the guide and driver

#### **What are the benefits of booking via the group service of the Tourism Federation of the Province of Liège?**

- o A single contact partner for a full and personalised service
- o Delivery of a “turnkey” stay: total responsibility for organising the group stay, from booking and billing
- o A dynamic and multilingual team (FR-DE-NL-EN-ES-IT)
- o The competence of local professionals, experts on their region
- o The services of experienced, multilingual tour

guides – FR-DE-NL-EN-ES-IT (optional)

- o Numerous benefits, such as free for the driver and guide, negotiated rates, etc.
- o A range of stays and high quality, varied itineraries: days, weekends, stays, culture, nature, landscape, heritage, events, memorial, lifestyle, and more.
- o “A la carte” suggested stays
- o Guaranteed reply within 48 hours

#### **INFORMATION AND BOOKING:**

Fédération du Tourisme de la province de Liège

Département réceptif (Ardenne Incoming)

Céline Lennertz

+32 (0)4/279 57 96

[celine.lennertz@provincedeliege.be](mailto:celine.lennertz@provincedeliege.be) [incoming@liegetourisme.be](mailto:incoming@liegetourisme.be)

<https://groupe.liegetourisme.be/>

The full tourist offer and events programme are available on the Internet site of the Tourism Federation of the Province of Liège: [www.liegetourisme.be](http://www.liegetourisme.be)

To put together your stay in terms of activities or accommodation in Liège province, go to: [www.ouftitourisme.be](http://www.ouftitourisme.be)

All reproduction is prohibited unless the Tourism Federation has given its consent



## EXHIBITION - TUTANKHAMUN

From 14/12/2019 to 31/05/2020

The Tutankhamun exhibition will open at Liège-Guillemins Railway Station from December 14, 2019 to May 31, 2020. This original exhibition, which takes visitors to the heart of ancient Egypt, invites them to follow the gripping story of Howard Carter, the archaeologist who discovered Tutankhamun's tomb. In the course of the trail, visitors will be taken on a real adventure to experience the many facets of daily life in the 18th Egyptian dynasty. Several hundred original pieces from prestigious international museums and private collections are staged in awesome scenery, including the reconstruction of the tomb of the young pharaoh with a tragic fate. The exhibition, of unprecedented importance in Belgium and of international scope, will include historical museum pieces firstly exhibited to the public as well as quality replicas from the Cairo Workshops.

TGV Railway Station Liège-Guillemins – Parking level 1

info@europaexpo.be

+32 (0)4 224 49 38

Open 7 days a week – 10 am–6 pm (Ticketing > 5pm)

<https://www.europaexpo.be>

## EXHIBITION: DARWIN, L'ORIGINAL

From 12 October 2019 until 2 February 2020 at La Cité Miroir in Liège

La Cité Miroir in Liège is set to host an exhibition dedicated to a personality who is at once famous and little-known: Charles Darwin, father of the theory of evolution. Beyond the portrait of a renowned naturalist and scientific biologist emerges a humanist, abolitionist and pioneer of animal and human ethology, for whom empathy and collaboration were also the result of evolution.

Realised in 2015 by Cité des sciences de Paris in partnership with the Muséum national d'Histoire naturelle, the exhibition offers a voyage into the singular and fecund thinking of this iconic personality, author of the seminal work *On the Origin of Species by Means of Natural Selection*. Visitors are guided through an interactive, multi-subject trail, amid an immersive graphic universe. Strolling through the lush, luxuriant vegetation that surrounds them, they follow the path on a journey of exploration through Darwin's work and the Victorian imagination.

<http://www.citemiroir.be/en>



## HYPERREALISM SCULPTURE

**Ceci n'est pas un corps.**

**22.11.19 - 03.05.20**

«Hyperrealism» is an art movement that began in the United States in the 1970s. Shunning abstraction, the hyperrealist artist seeks to achieve a meticulous representation of nature, to the point that observers sometimes wonder if they are in the presence of living bodies. The works are sometimes amusing, sometimes disturbing, but always meaningful.

With a selection of some fifty hyperrealist sculptures by leading international artists (George Segal, Ron Mueck, Maurizio Cattelan, Berlinde De Bruyckere, Duane Hanson, John De Andrea, and others) the exhibition “Ceci n'est pas un corps. Hyperrealism – Sculpture” will illustrate the evolution of the human figure in the works of hyperrealist sculptors from the 1970s to the present day. The selection will highlight different key issues in this approach to figurative realism and show how our perception of the human body has continuously evolved.

The title of the exhibition, borrowed from Magritte and his famous pipe, is no more innocent than was his. “What is art?” the artist seems to ask the audience. As detailed and perfectly modelled as the contours and the texture are on the real object, what is its transposition on the canvas if not the illusion of

this real? It's as if the artist got as close to the real as he could, only to see it escape his brush. And, more fundamentally, is it the function of art to encapsulate the real?

Liège seized a unique opportunity to participate in the world tour of the exhibition, which was presented at the Museum of Fine Arts of Bilbao (Spain), at the Museum of Contemporary Art of Monterrey (Mexico), at the National Gallery in Canberra (Australia) and at the Kunsthal of Rotterdam; everywhere with considerable success. In Rotterdam it attracted no less than 230,000 visitors in less than three months!

<https://en.laboverie.com>





# WARHOL - THE AMERICAN DREAM FACTORY

22.11.19 - 03.05.20

« Warhol, The American Dream Factory » looks back on the career of this most influential artist of the twentieth century and confronts it with the ups and downs of his time. Over three decades, the exhibition highlights the particular moments of interplay between the work of this exceptional artists and the evolution of American society, through a multidisciplinary approach. If it seeks to question a work that is still alive today, the exhibition is also a living portrait of this America whose soul he has captured like no other of his contemporaries.

The highlights of the exhibition:

- Iconic works by Andy Warhol, one of the greatest artists of the second half of the 20th century, and by other artists before and after his time (Basquiat, Duchamp, Lichtenstein,...).
- A historical fresco that illustrates the struggles and societal changes that the “Factory” echoed.
- A multidisciplinary approach emphasizing performances, poetry, music and experimental cinema.
- Exceptional first hand archival material.

More information

Parc de la Boverie • BE 4020 Liège

[www.laboverie.com](http://www.laboverie.com) • [info@laboverie.com](mailto:info@laboverie.com)

+32 4 238 55 01



# PRESS CONTACT

Monsieur Michaël MATHOT

[michael.mathot@provincedeliege.be](mailto:michael.mathot@provincedeliege.be)

1, place de la République française, 4000 Liège

Tél. +32 (0)4/279.56.22

GSM. +32 (0)495/51.19.75

